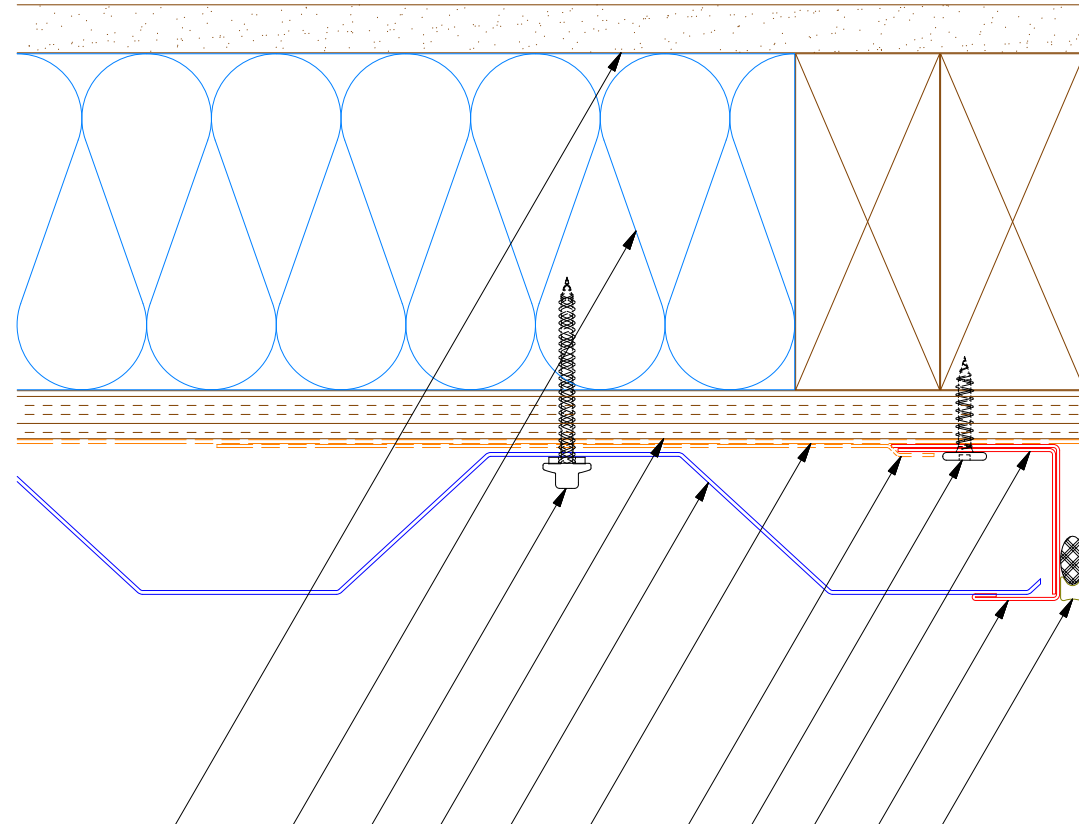
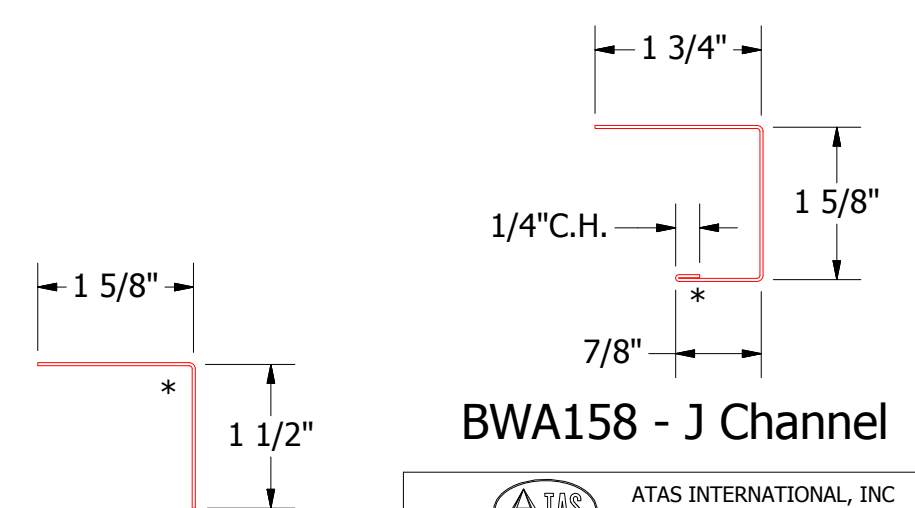
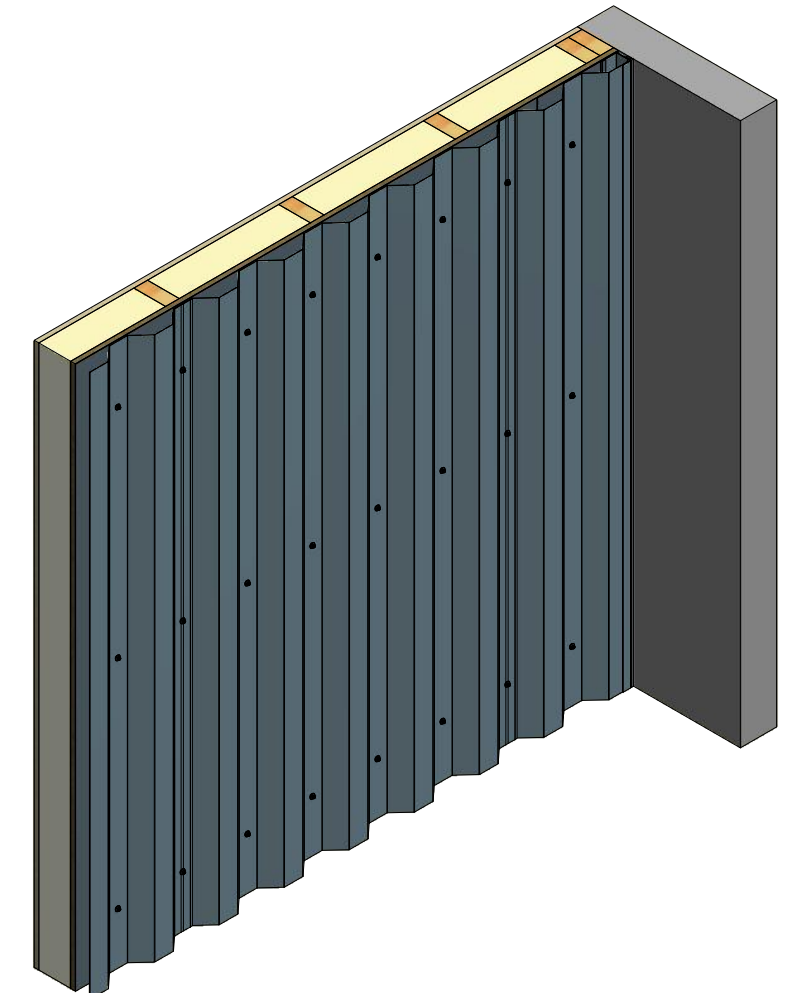


Vertical Panel



- Interior Finish
- Insulation
- #10 x 2" Painted Hex Washer Head Screw with Washer
- 1/2" Plywood (min.)
- 7.2" Rib Panel
- Water and Air Resistive Barrier
- Membrane Strip over J Channel and Angle Trim
- #10 x 1" Wafer Head Screw
- Angle Trim
- J Channel
- Backer Rod and Sealant



BWA680 - Angle Trim

BWA158 - J Channel

ATAS ATAS INTERNATIONAL, INC
 Allentown PA
 610-395-8445
 Mesa AZ
 480-558-7210

REV. NO.				DATE				DESCRIPTION OF REVISION				BY		APP	
TITLE												7.2 inch Rib Endwall Detail			
DWG. NO.								DR		KRK		DATE		2/1/2016	
MATERIAL								APP		DAS		DATE		7/20/16	
								SH. SIZE		B		SCALE		X:X	