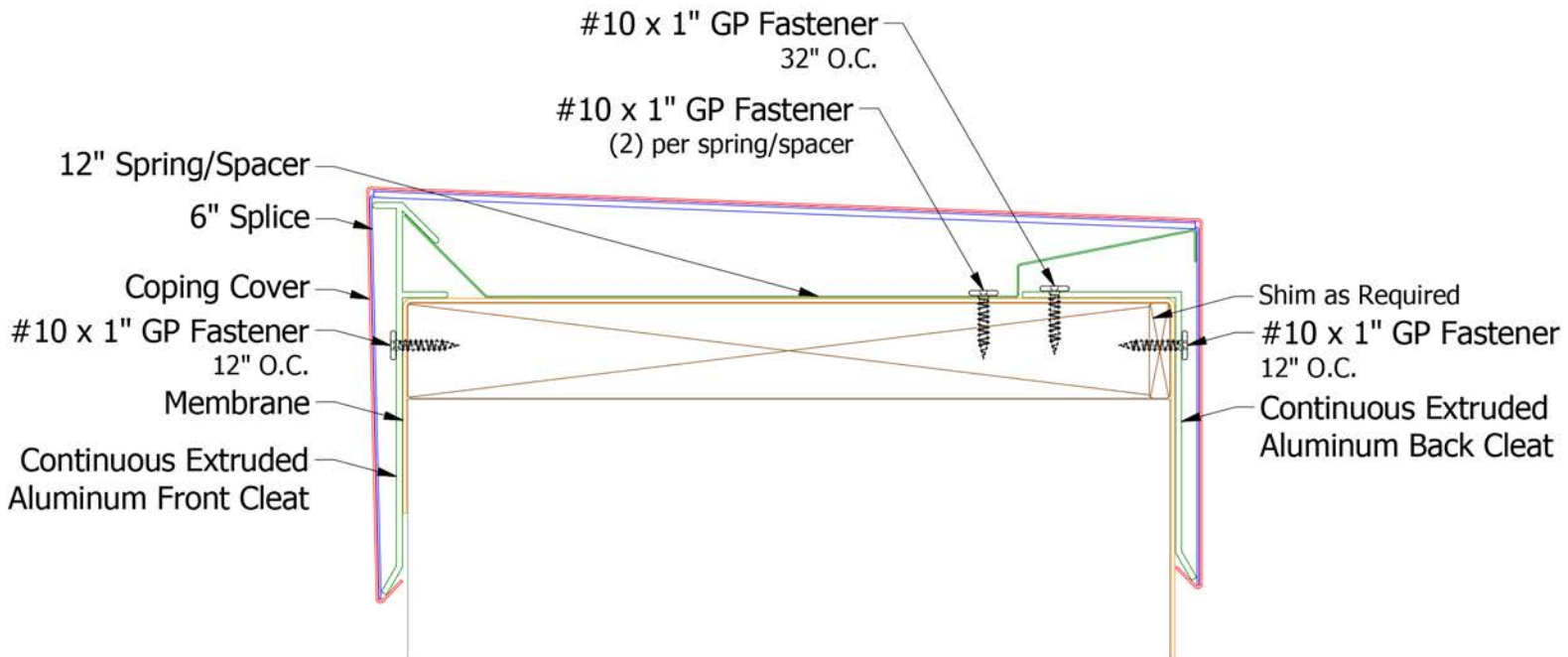
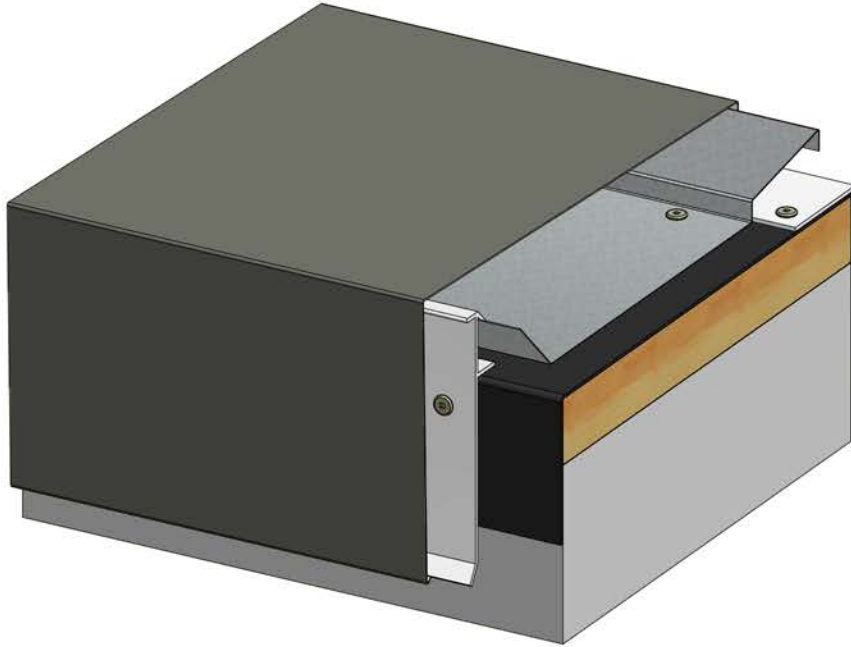
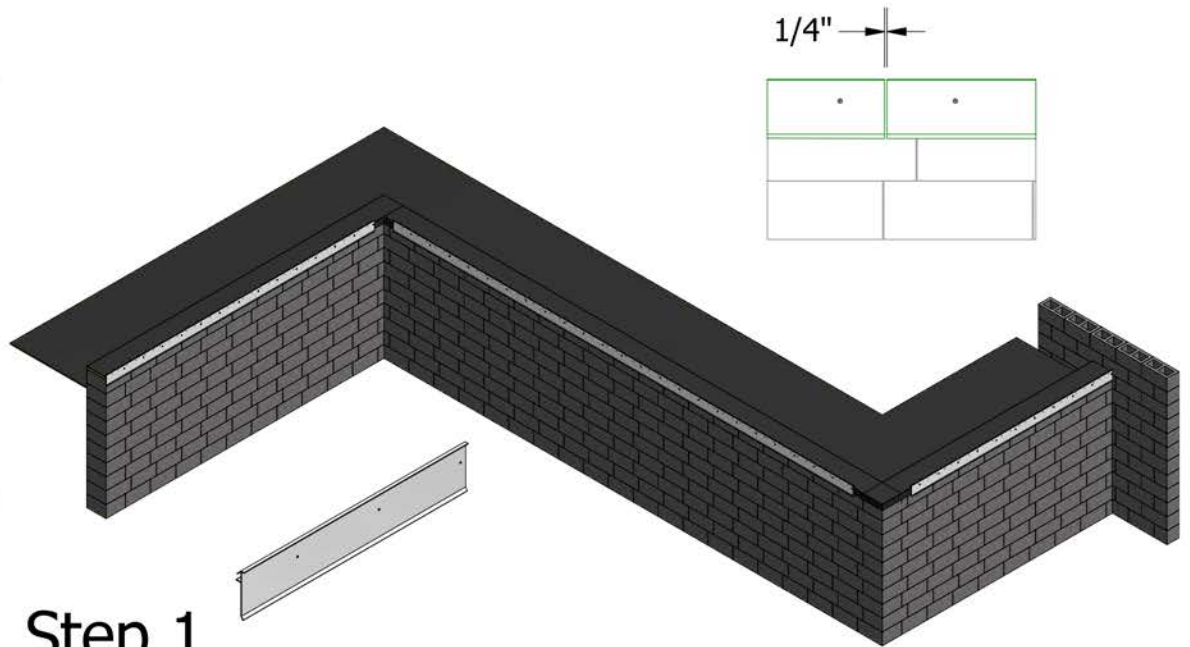




RAPID-LOK ULTRA COPING
INSTALLATION GUIDE

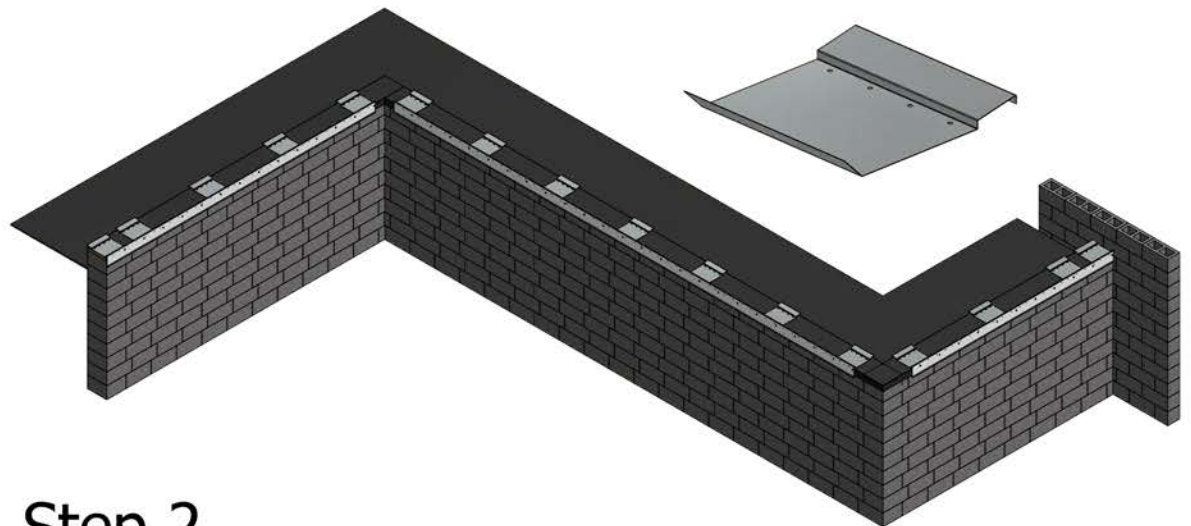


Step 1
Wood blocking must be flush with the face of the wall below at front and back. Wall should be covered with roof membrane or water shield extending 1" below bottom of wood at face. Front extruded cleat is to be continuous with 1/4" gap between extrusion sections. At inside miters cleat should be 6" from the inside corner, and at outside miters it should be a distance equal to the wall width + 6" from the outside corner. Front cleat flange should be set on top of the blocking, and the cleat secured from the face with provided 1" screws through each slotted hole at 12" O.C.



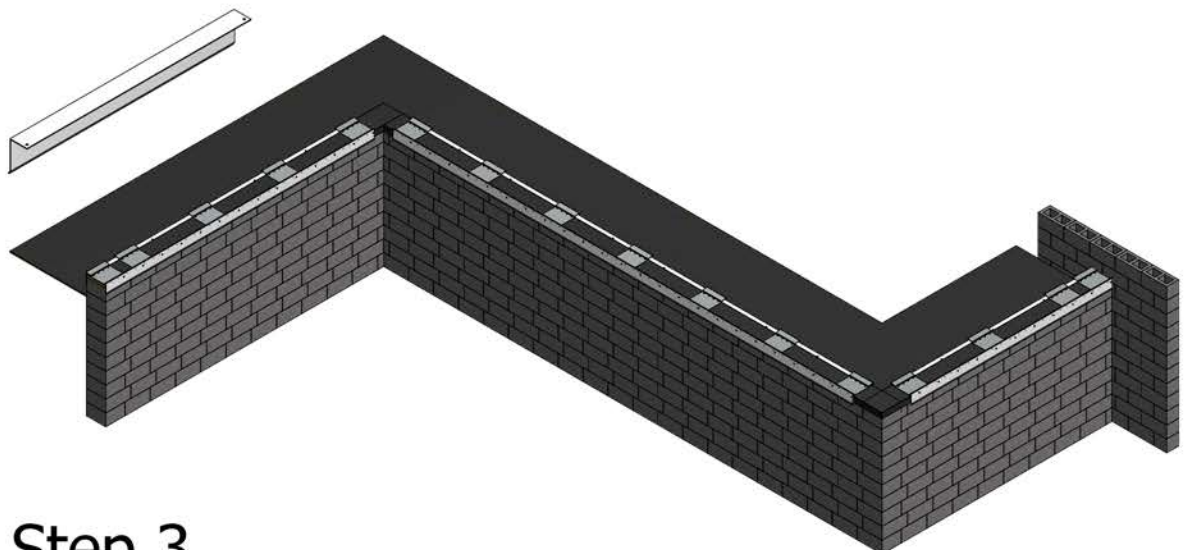
Step 1

Step 2
Position 12" wide spring/spacers on the end of cleat at each miter, end cap, and end terms. Position a second spring/spacer 24" O.C. from the ends where end caps and end terms will be located. Position remaining spring/spacers at < 48" O.C. making sure there is one at each coping splice location. Hook front of each spring/spacer under lip at top of the extrusion, and secure back with two (2) provided 1" screws through fastener holes.



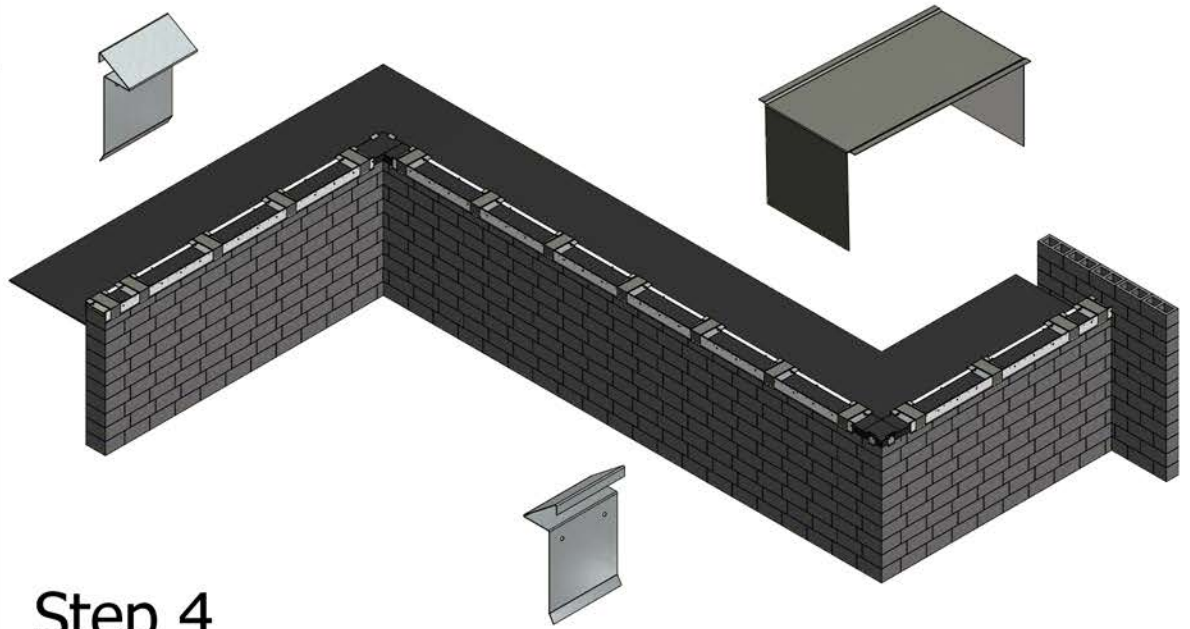
Step 2

Step 3
Position back cleat on top of blocking and against spring/spacer to assure proper coping width. Back cleat is continuous with 1/4" gaps between sections, and is cut short of corners similar to front cleat (step 2a). First secure back cleat with provided 1" screws through each slotted hole in top flange at 32" O.C. Cleat must be perpendicular to the top of the wall; Place shims or additional blocking behind cleat if needed, then place 1" screws through each slotted hole in back of cleat at 12" O.C.



Step 3

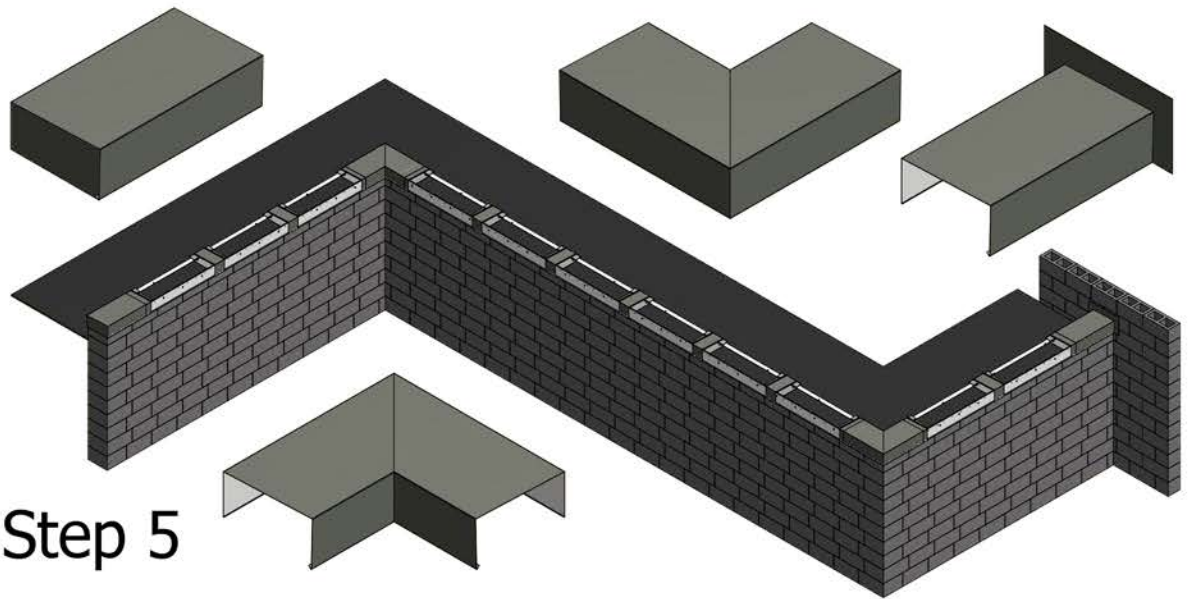
Step 4
Screw a spring corner support on each side of the corner "point" of both inside and outside miters. Place a splice plate on every spring/spacer.



Step 4

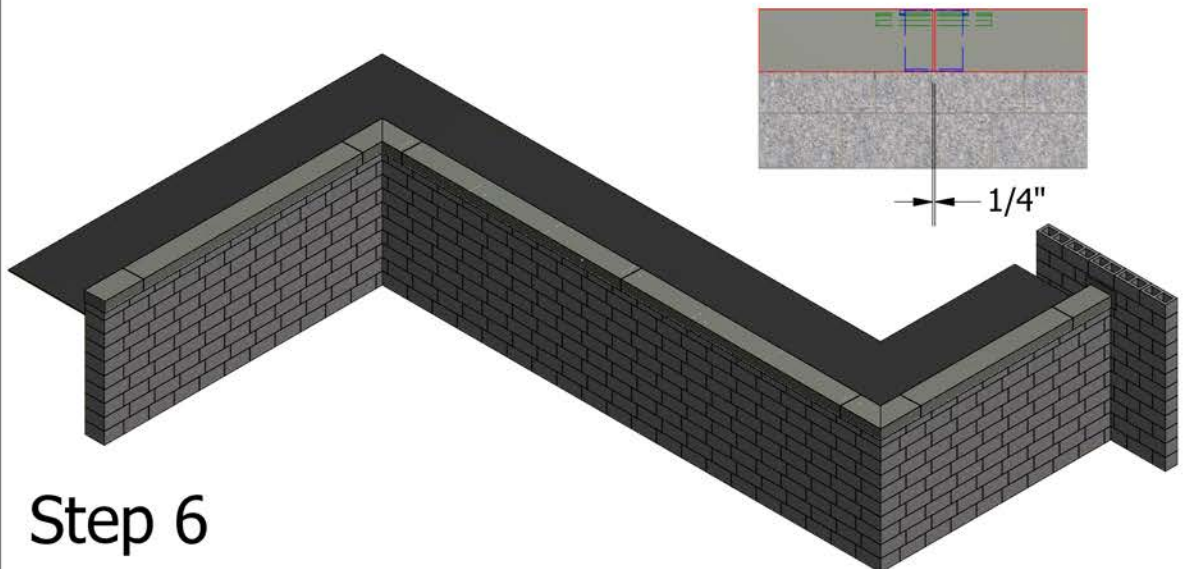
Step 5
Install coping miters first. Hook the miter over the front cleat and rotate it back over the wall making sure both legs engage the cleats. Push down on the top of the coping at the back edge to press it past the back cleat to snap-on (see Additional Details).

Next install coping end caps and end terms. Hook the front over the front cleat, rotate back over the wall. Push down on the top of the coping at the back edge to press it past the back cleat to snap-on (see Additional Details).



Step 5

Step 6
Finish by installing the 12'-0" long coping sections between miters and ends making sure there is a spring/spacer and splice plate at each joint. Plan the layout to avoid cutting pieces shorter than 4'-0" and to have a balanced joint pattern if possible. Hook the front over the front cleat, rotate back over the wall. Push down on the top of the coping at the back edge to press it past the back cleat to snap-on (see Additional Details). Leave a 1/4" gap between sections.

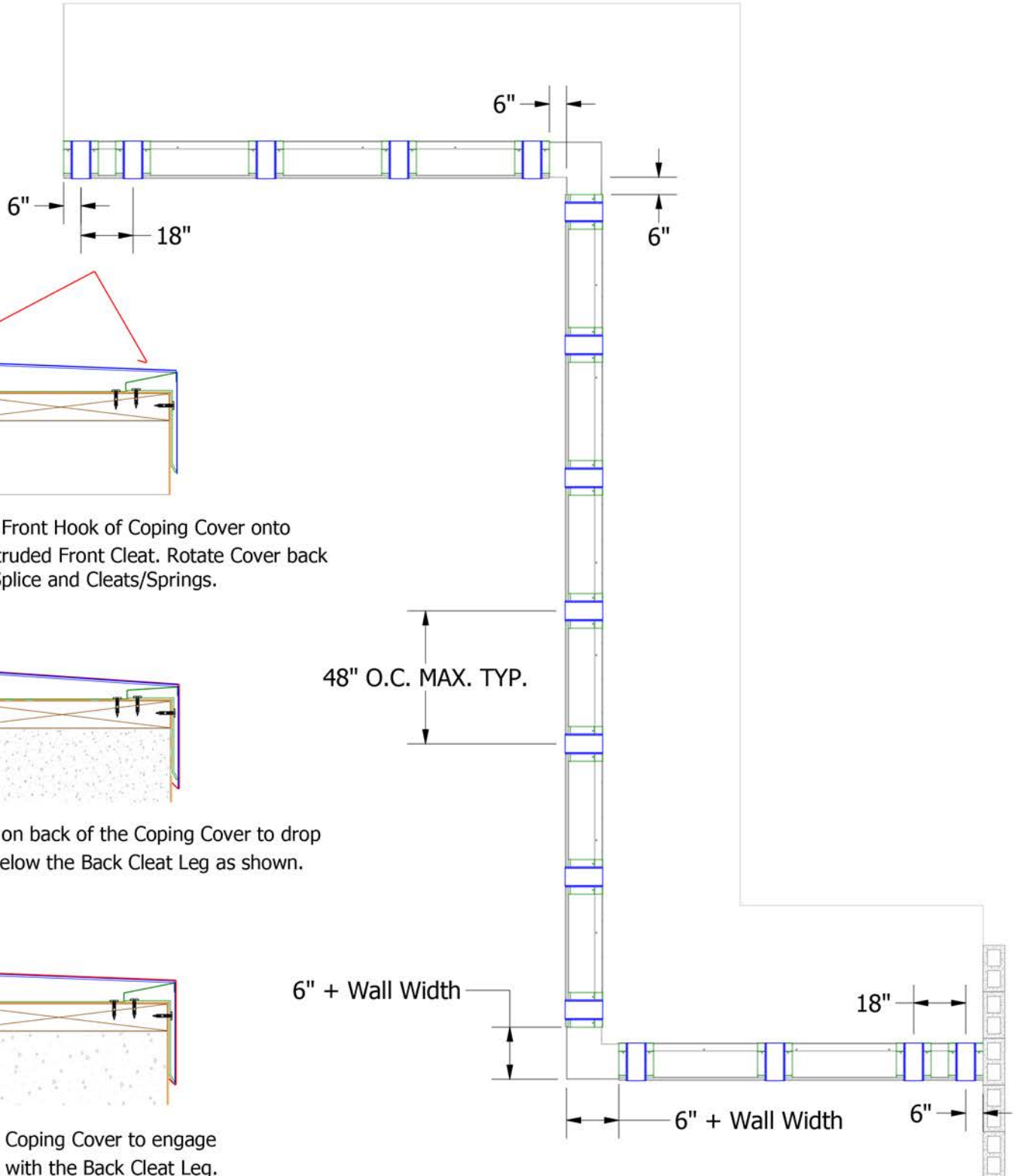


Step 6



For more information go to: www.atas.com

Rapid-Lok Ultra Coping
ADDITIONAL DETAILS



(A) Engage Front Hook of Coping Cover onto the Continuous Extruded Front Cleat. Rotate Cover back onto Splice and Cleats/Springs.

(B) Push Down on back of the Coping Cover to drop the Back Hook below the Back Cleat Leg as shown.

(C) Release Coping Cover to engage the Back Hook with the Back Cleat Leg.