

1. PRODUCT NAME

ATAS Ledge Cap

2. MANUFACTURER

ATAS INTERNATIONAL, INC.
Website: www.atas.com
Email: info@atas.com
Corporate Headquarters:
Allentown, PA 18106
Phone: (800) 468-1441

3. PRODUCT DESCRIPTION

Basic Uses:

ATAS Ledge Cap is used for both new construction and re-roofing. It is used to cap a ledge or wall project such as brick veneer or stucco, and is frequently flashed by a fascia or coping.

Composition and Materials:

Standard Offerings: ATAS Ledge Cap has a continuous 22 gauge metallic coated steel cleat, and a cover that is brake formed from 0.040, 0.050, 0.063 aluminum, and 24, 22 gauge metallic coated steel.

Special Offerings: 22 gauge stainless steel cleat, and covers of 16, 20 oz. copper; 24, 22 gauge stainless steel; and 1.0 mm zinc.

Sizes and Profiles:

ATAS Ledge Cap has a wall flange, a top sloping down 0.5", and vertical flat face. Standard sizes are: 3" – 6" face, 1.5" – 18" top, 2" – 6" flange. Custom sizes are available. Standard straight sections are 12'-0" long, and standard miters are 1'-0" x 1'-0" at the wall flange. Pre-fabricated miters and other accessories are available cinched and sealed (standard) or welded and post-painted (optional).

Color and Finish:

Offered in 70% PVDF finish, as well as Clear Satin or Dark Bronze anodized aluminum; choose from over 40 stock colors or custom colors. Request a color chart or samples for additional details.

4. TECHNICAL DATA

70% PVDF based finishes tested by paint supplier for:

- Dry Film Thickness: ASTM D 1005, ASTM D 1400, ASTM D 4138 or ASTM D 5796
- Specular Gloss: ASTM D 523
- Pencil Hardness: ASTM D 3363
- T-Bend Flexibility: ASTM D 4145
- Mandrel Bend Flexibility: ASTM D 522
- Impact Resistance: ASTM D 2794
- Adhesion: ASTM D 3359
- Water Immersion Resistance: ASTM D 870
- Abrasion Resistance: ASTM D 968
- Acid Resistance: ASTM D 1308

- Acid Rain Resistance (Kesternich): ASTM G 87 or DIN 50018
- Salt Spray: ASTM B 117
- Cyclic Salt Spray: ASTM D 5894
- Humidity Resistance: ASTM D 2247
- Accelerated Weathering: ASTM D 822 and ASTM G 155, ASTM G 151 or ASTM G 153
- Color Retention, Florida Exposure: ASTM D 2244
- Chalking Resistance: ASTM D 4214
- Cleveland Condensing Cabinet: ASTM D 4585
- Cure Test, MEK Resistance: ASTM D 5402
- Alkali Resistance, Sodium Hydroxide: ASTM D 1308, Procedure 7.2
- Organic Coatings meet AAMA 2605 when applied to aluminum.
- Galvanized Steel: ASTM A 653
- 55% Al-Zn alloy coated Steel: ASTM A 792
- Aluminum: ASTM B 209
- Copper: ASTM B 370
- Coil Coating: ASTM A 755

5. INSTALLATION

ATAS Ledge Cap is a continuous perimeter edge system designed to cap a ledge or wall project such as brick veneer or stucco, and is frequently flashed by a fascia or coping. Installation instructions are available through ATAS. Visit www.atas.com for more information.

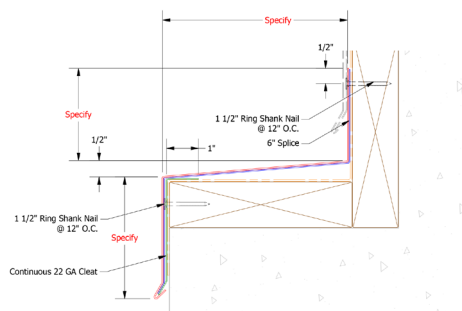
6. AVAILABILITY AND COST

Availability:

ATAS Ledge Cap is readily available through ATAS product distributors. A complete line of related components and accessories is available to complete the perimeter edge system. Flat sheet and/or coil stock in matching color is also available for fabrication of other items by the installing contractor.

Cost:

Contact ATAS product representatives or distributors for current pricing.



7. WARRANTY

Products coated with a fluoropolymer, 70% PVDF finish carry a limited warranty against chalking and fading.

8. MAINTENANCE

ATAS Ledge Cap requires minimal maintenance. Surface residue is easily removed by conventional cleaning methods. For painted products, minor scratches should be touched up with matching paint, available from the manufacturer.

9. TECHNICAL SERVICES

Complete technical information and literature are available at www.atas.com. ATAS will assist with design ideas and shop drawings.

10. FILING SYSTEM

- www.atas.com
- Additional product information is available from the manufacturer upon request

ATAS International, Inc., has the ability to customize Perimeter Edge Systems per specific projects. Please contact the factory to discuss options for your project.

