

## 1. PRODUCT NAME

**Isoleren® WL Insulated Metal Wall Panel**  
**IWL422, IWL421, IWL423, IWL424**

## 2. MANUFACTURER

ATAS INTERNATIONAL, INC.  
Website: [www.atas.com](http://www.atas.com)  
Email: [info@atas.com](mailto:info@atas.com)  
Corporate Headquarters:  
Allentown, PA 18106  
Phone: (800) 468-1441

## 3. PRODUCT DESCRIPTION

### Basic Uses:

Isoleren WL panels are used for walls on both new and retrofit commercial, industrial and architectural construction applications. This is a structural panel that can be fastened directly to structural framing or solid substrates using "Z" girts or hat channels. Isoleren WL offers aesthetics and enhanced thermal performance in a single component wall assembly. Isoleren WL is an alternative to traditional multi component wall assemblies.

### Composition and Materials:

**Standard Offerings:** Isoleren WL facer panels are roll formed from 24, and 22-gauge 55% Al-Zn Alloy Coated Steel with Acrylic Coating. Liner panels are available in 26, 24, and 22-gauge.

**Special Offerings:** G90 Galvanized and Stainless Steel. Subject to minimum quantities and lead time.

### Sizes and Profiles:

Isoleren WL panels are available in 2", 2.5", 3", and 4" thickness and 42" width modules. Isoleren WL is also available in a 1 1/4" reveal at the panel interlock. Panel lengths are cut to customer specifications, with a minimum of 8'0" and maximum of 40'0" and/or project design considerations. The Isoleren ML profile is standard on all liner panels.

### Color and Finish:

A choice of seven stock colors are available in 70% PVDF finish in low gloss (request color chart or chips). Also available in Siliconized Polyester standard gloss. Liner finish is available as Polyester or Siliconized Polyester, 70% PVDF, and Standard Gloss (USDA white). Facer texture is smooth or embossed. Liner texture may be smooth or embossed.

## 4. TECHNICAL DATA

70% PVDF based finishes tested by paint supplier for:

- Dry Film Thickness: ASTM D 1005, ASTM D 1400, ASTM D 4138 or ASTM D 5796
- Specular Gloss: ASTM D 523
- Pencil Hardness: ASTM D 3363
- T-Bend Flexibility: ASTM D 4145

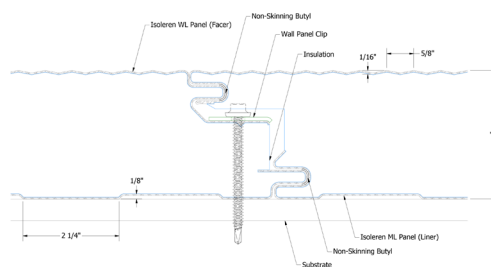
- Mandrel Bend Flexibility: ASTM D 522
- Impact Resistance: ASTM D 2794
- Adhesion: ASTM D 3359
- Water Immersion Resistance: ASTM D 870
- Abrasion Resistance: ASTM D 968
- Acid Resistance: ASTM D 1308
- Acid Rain Resistance (Kesternich): ASTM G 87 or DIN 50018
- Salt Spray: ASTM B 117
- Cyclic Salt Spray: ASTM D 5894
- Humidity Resistance: ASTM D 2247
- Accelerated Weathering: ASTM D 822 and ASTM G 155, ASTM G 151 or ASTM G 153
- Color Retention, Florida Exposure: ASTM D 2244
- Chalking Resistance – ASTM D 4214
- Cleveland Condensing Cabinet: ASTM D 4585
- Cure Test, MEK Resistance: ASTM D 5402
- Alkali Resistance, Sodium Hydroxide: ASTM D 1308, Procedure 7.2

### Panel testing/ratings:

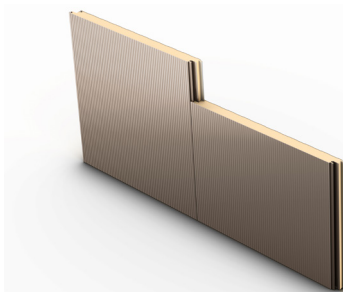
- Environmental Performance: ASTM C518, ASTM E283, ASTM E331
- Foam Core Characteristics: ASTM C273, ASTM D1621, ASTM D1622, ASTM D1623, ASTM D6226
- Fire Resistance: ASTM E84, NFPA 285, FM 4880
- Impact Resistance: FM 4881
- Engineering Properties: ASTM E1592, ASTM E72, FM 4881
- Load tables available upon request
- Galvanized Steel: ASTM A 653
- 55% Al-Zn alloy coated Steel: ASTM A 792
- Coil Coating: ASTM A 755

## 5. INSTALLATION

Isoleren WL is a structural wall panel that can



Thickness (2, 2.5, 3, and 4-inch)



be installed either vertically or horizontally. Installation guide is available through ATAS. Visit [www.atas.com](http://www.atas.com) for more information.

## 6. AVAILABILITY AND COST

### Availability:

Isoleren WL panels are readily available through ATAS product distributors. A complete line of related components and trim accessories is available to complete the wall system. Flat sheet and/or coil stock in matching color is available for fabrication of related accessories by the installing contractor. Factory formed options are also available.

### Cost:

Contact ATAS product distributors for current pricing.

## 7. WARRANTY

Products coated with a fluoropolymer, 70% PVDF finish carry a limited warranty against chalking and fading.

## 8. MAINTENANCE

Isoleren WL panels require minimal maintenance. Surface residue is easily removed by conventional cleaning methods. For painted products, minor scratches should be touched up with matching paint, available from the manufacturer.

## 9. TECHNICAL SERVICES

Complete technical information and literature are available at [www.atas.com](http://www.atas.com). ATAS will assist with design ideas and shop drawings.

## 10. FILING SYSTEM

- [www.atas.com](http://www.atas.com)
- Additional product information is available from the manufacturer upon request.

