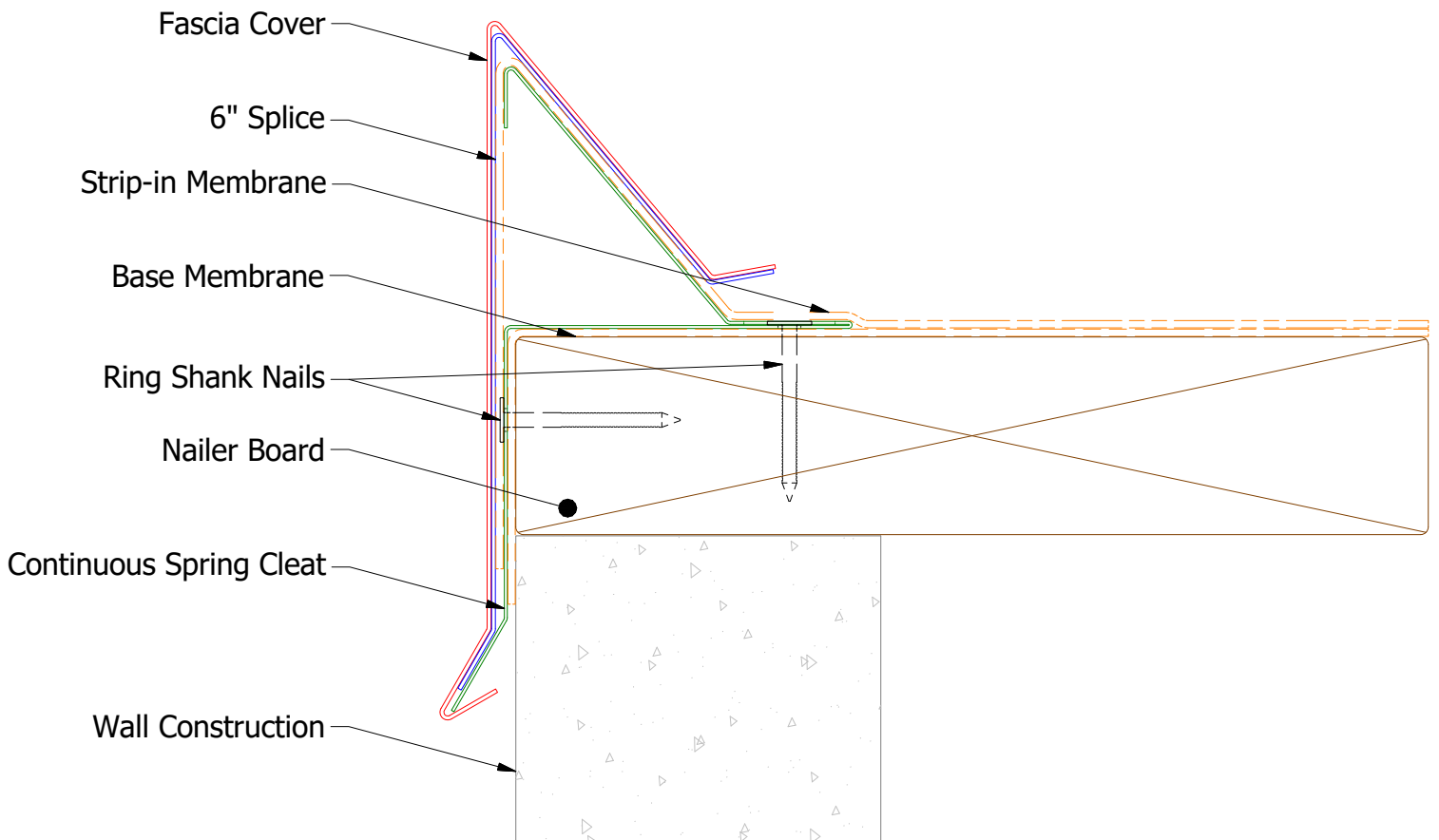
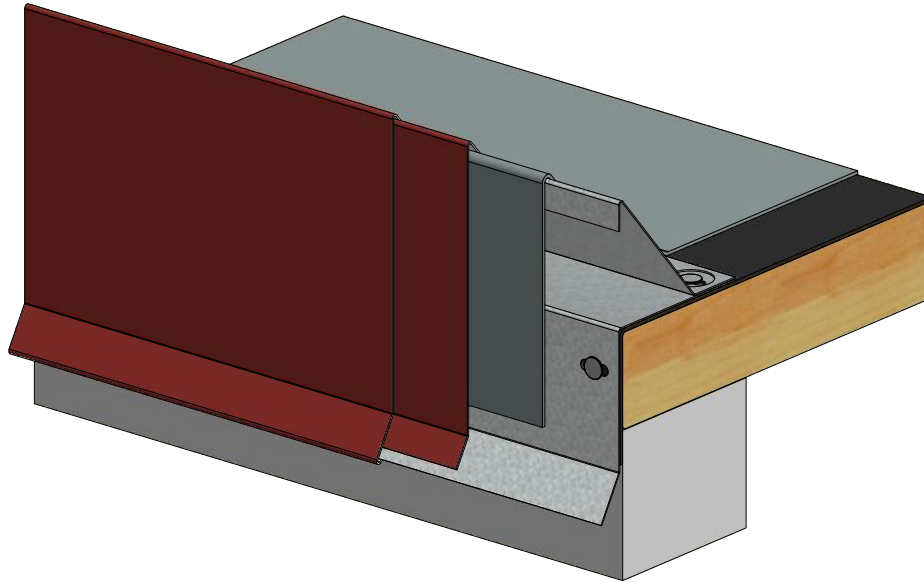
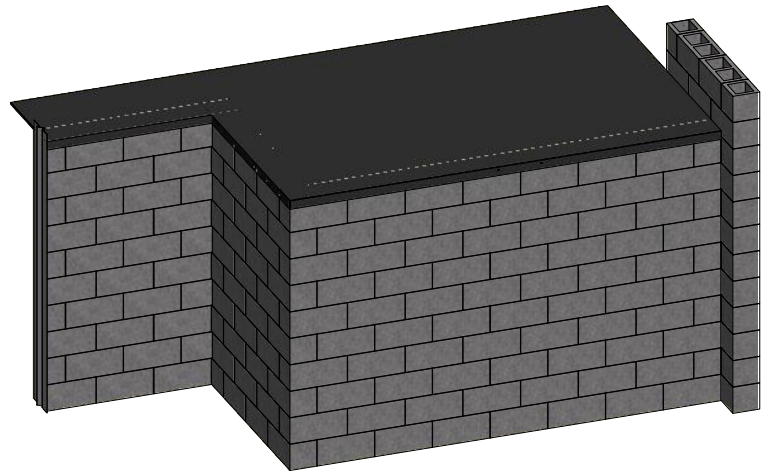
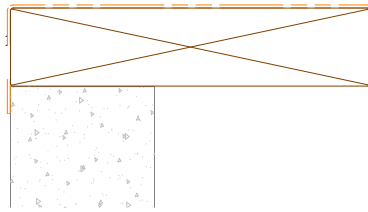


EDGE LOK 2 FASCIA INSTALLATION GUIDE

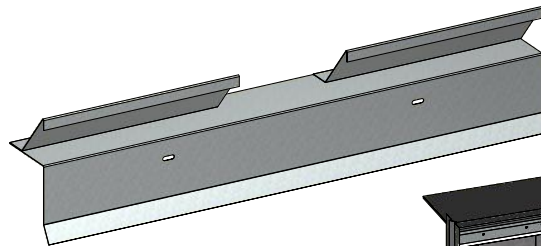


1) Wood blocking must be flush with the face of the wall below. Roof membrane must cover the wood extending 1" below the bottom of the blocking.

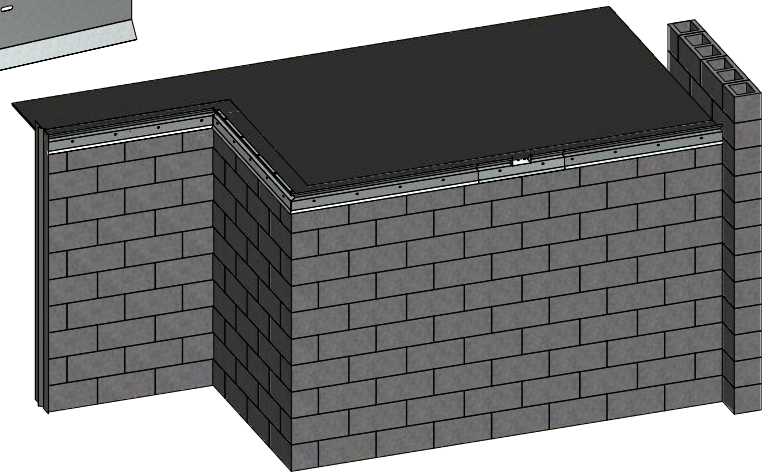
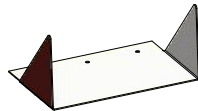


Step 1

2.1) Locate any scuppers. First secure the 2'-0" notched section of spring cleat tight to the top and face of the blocking with provided 1 1/2" ring shank nails.



2.2) Then position the scupper in the notch and nail through the pre-punched holes in the roof flange.

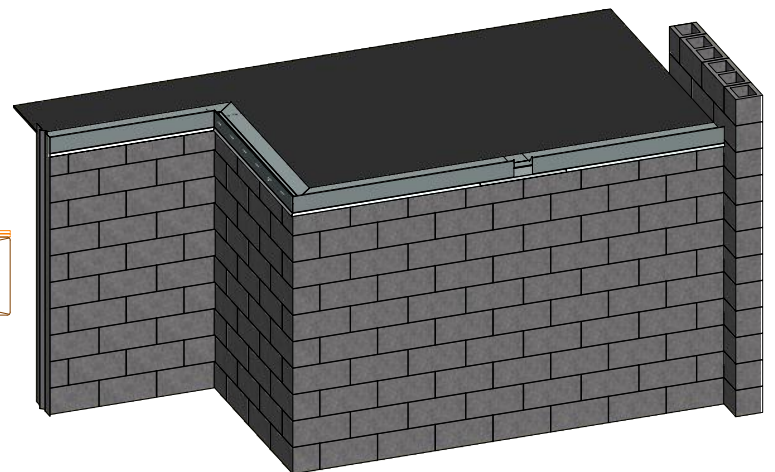
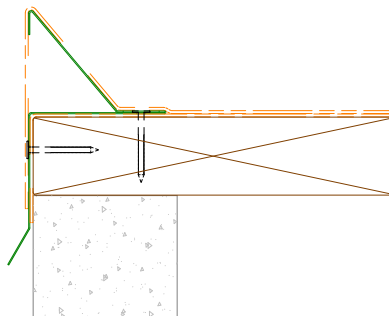


Step 2

3.1) Secure spring cleat tight to top and face of blocking with provided 1 1/2" ring shank nails.

3.2) Install one nail through each slotted hole at 12" O.C. front and top.

3.3) Miter cleat at corners taking care to not leave any sharp edges. Leave 1/8" gap between each cleat section for expansion.



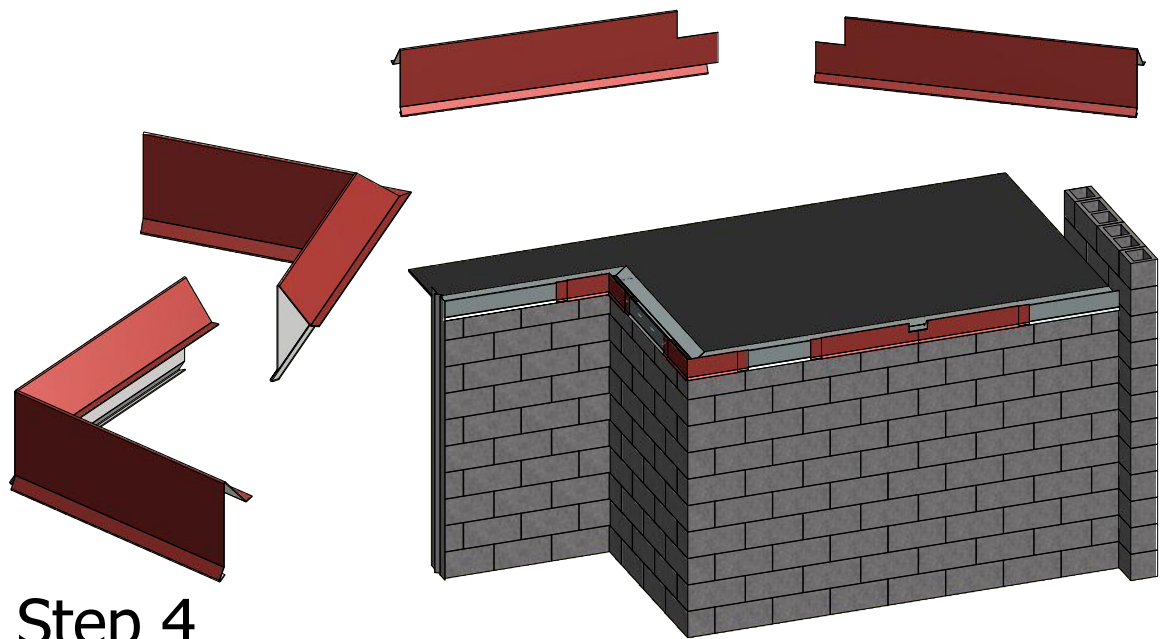
Step 3

4.1) Install fascia miters first. Set a splice on the spring cleat at each side of the miter so as to be centered on the miter ends.

4.2) Set the fascia miter over the top of the spring cleat and push down to snap the hem over the bottom of the cleat (See Details A, B, and C) making sure both legs engage the spring cleats.

4.3) Install scupper surrounds by setting them over the spring cleat on each side of the scupper and pushing down to snap on. Then slide the surrounds under the splice to butt tight in the middle.

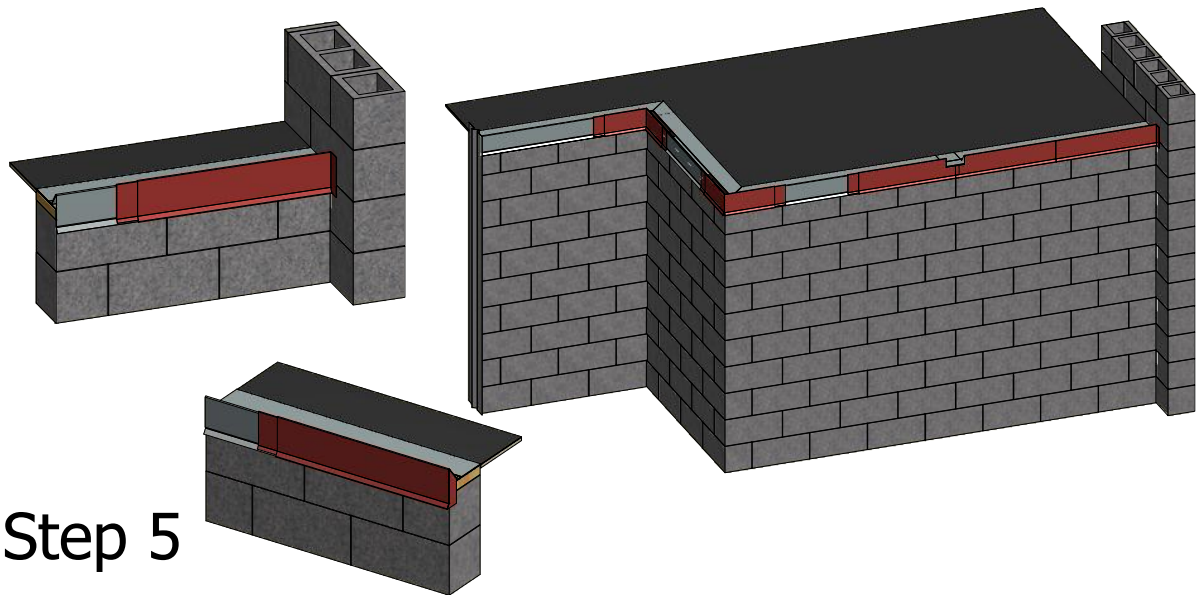
4.4) Slip a splice under each side of the surround.



Step 4

5.1) Next install fascia end closures, and end terms. Set a splice on the spring cleat to be centered on the open end of the fascia.

5.2) Set the fascia end cap or end term over the top of the spring cleat and push down to snap the hem over the bottom of the cleat (See Details A, B, and C).

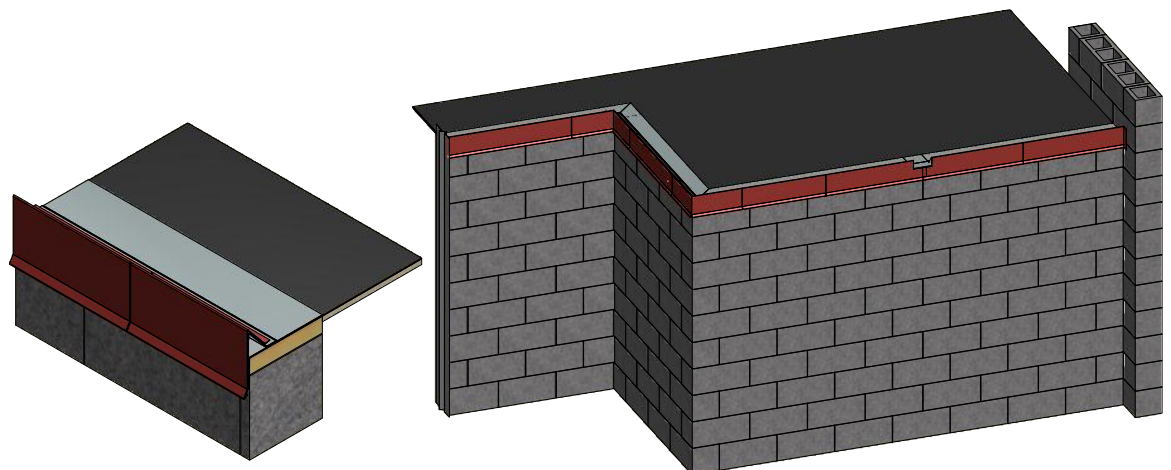


Step 5

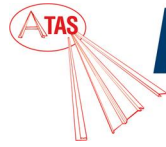
6.1) Plan fascia layout to avoid cutting any section shorter than 5'-0" if possible, and to balance joints with cut sections at the center or both ends of a run.

6.2) Set a splice on the spring cleat 12'-0" from the adjacent fascia miter or end.

6.3) Set the fascia over the top of the spring cleat and push down to snap the hem over the bottom of the cleat (See Details A, B, and C) Leave a 1/4" gap between sections for expansion.

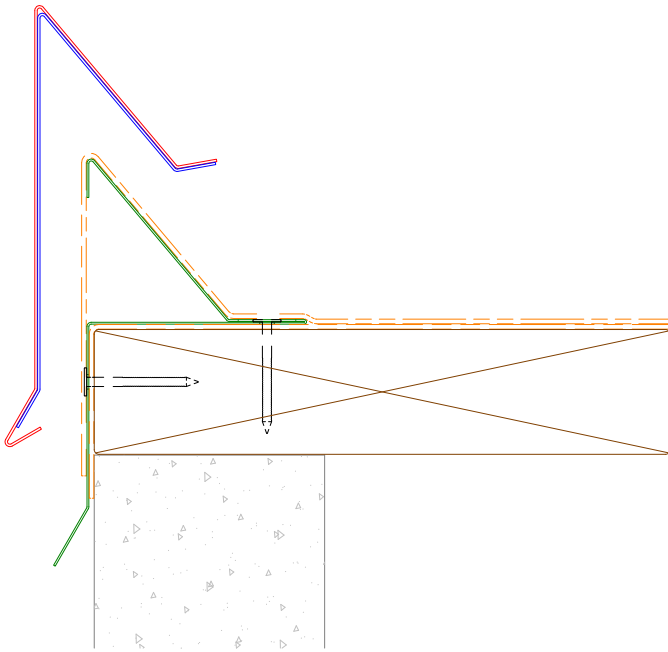


Step 6

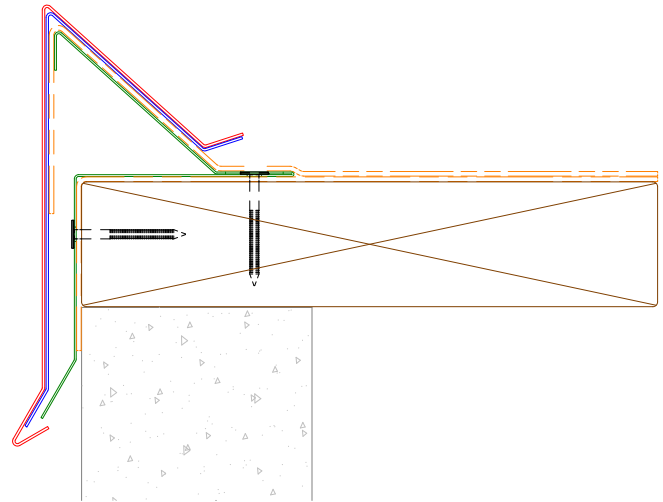


EDGE LOK 2 FASCIA
ADDITIONAL DETAILS

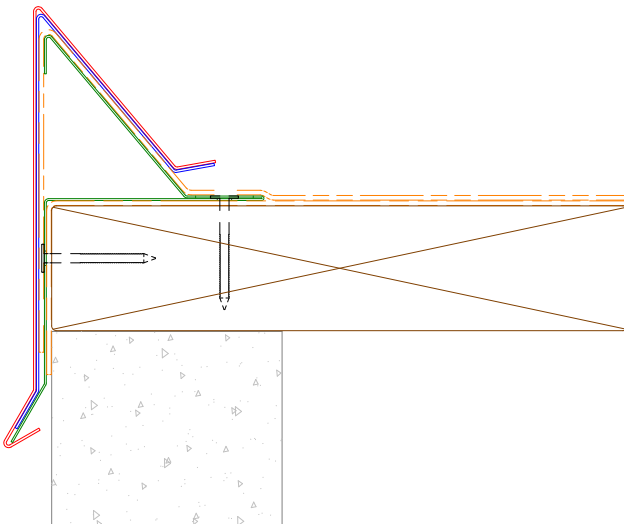
For more information go to: www.atas.com



(A) Place Fascia and Splices on top of Cleat and Membrane as shown.



(B) Push down on top of Fascia to Drop Fascia Hem below Cleat Leg as shown.



(C) Release Fascia to engage Hem with the Cleat.