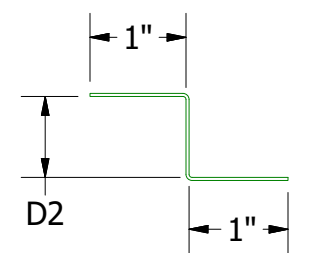



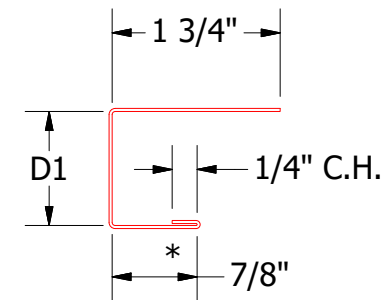
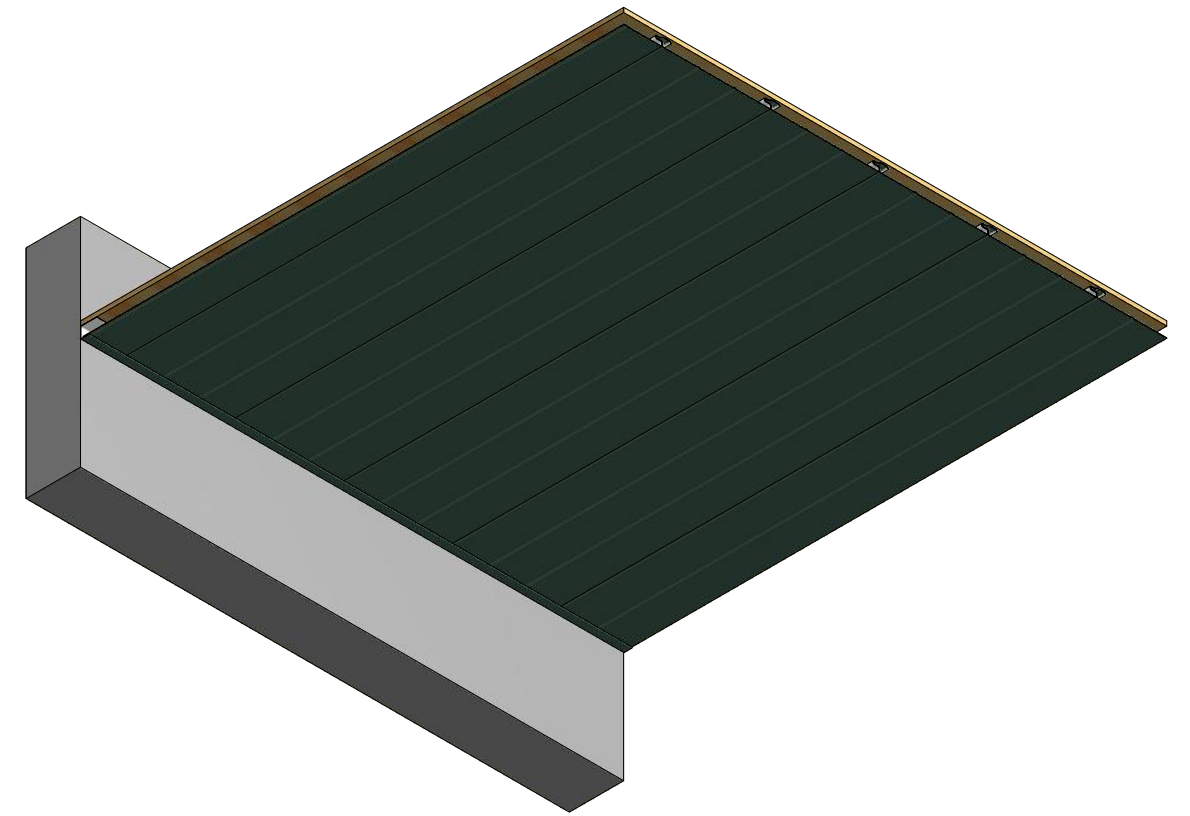
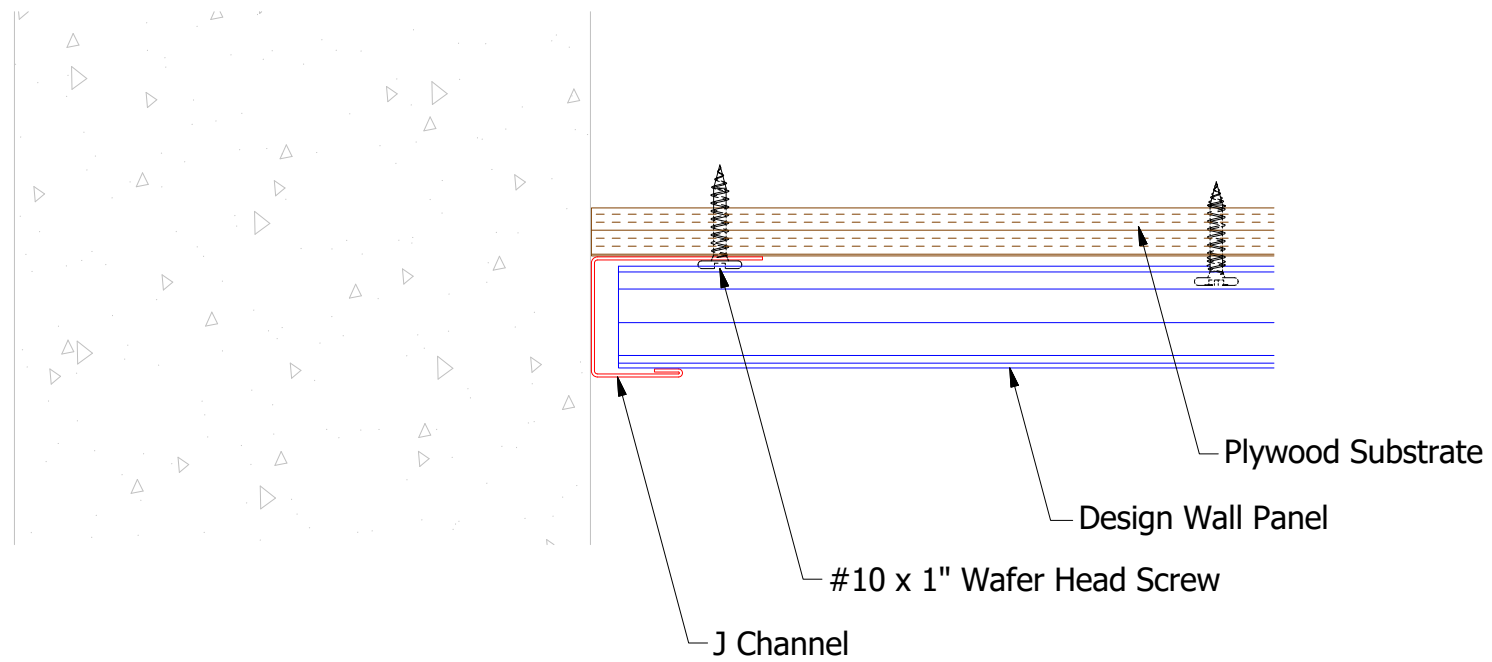
J Channel
 DWA118: D1= 1 1/8"
 DSA178: D1= 1 7/8"



Support Z
 DWA681: D2=1"
 DSA681:D2=1 5/8"

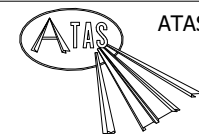
Note: * denotes color side.

				 ATAS INTERNATIONAL, INC Allentown PA 610-395-8445 Mesa AZ 480-558-7210	
TITLE				Design Wall Ending Endwall Soffit	
REV. NO.		DATE		DWG. NO.	
				DR RPS DATE 7/3/2023	
				APP DATE	
				MATERIAL	
				SH. SIZE B SCALE X:X	



J Channel
 DWA118: D1= 1 1/8"
 DSA178: D1= 1 7/8"

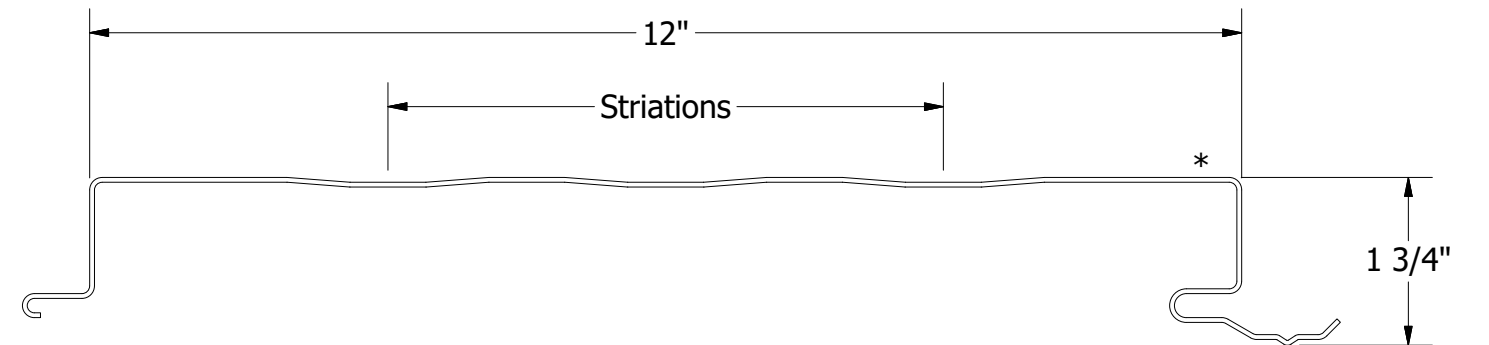
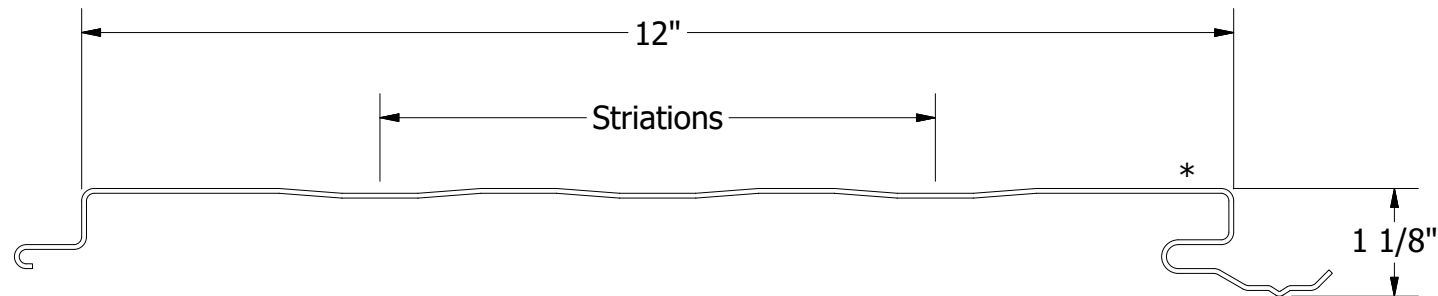
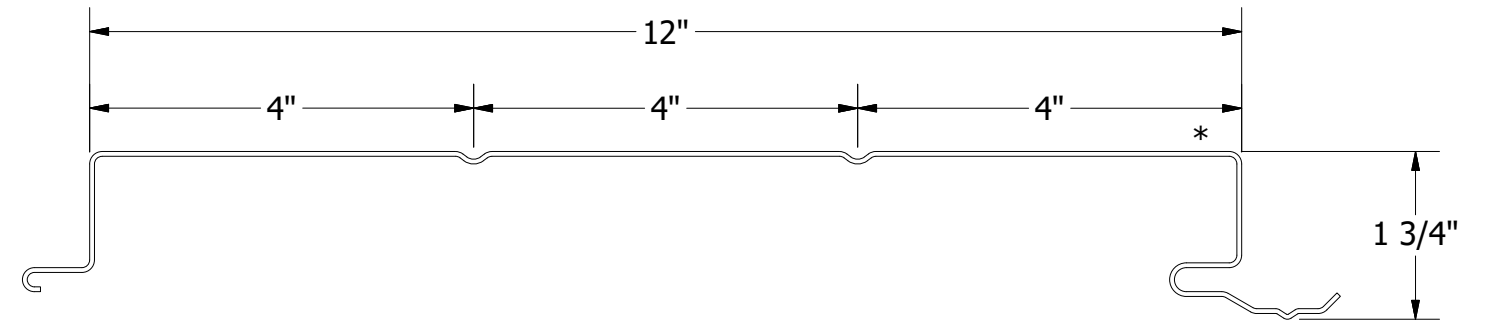
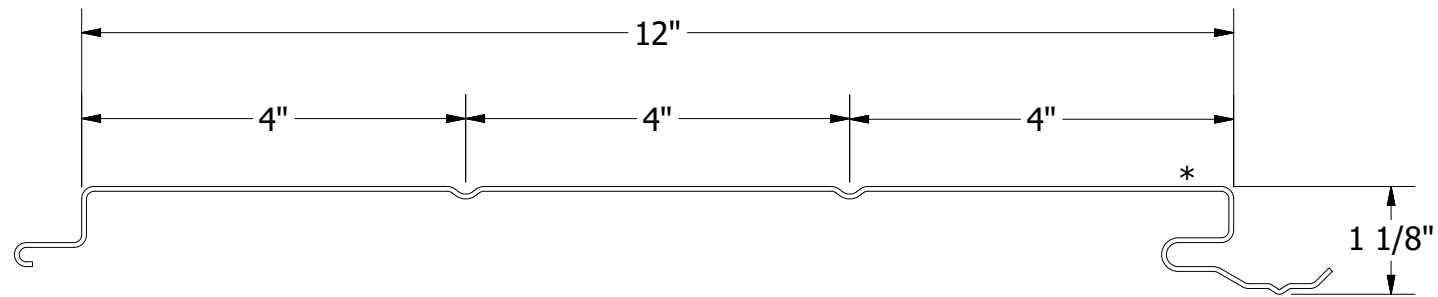
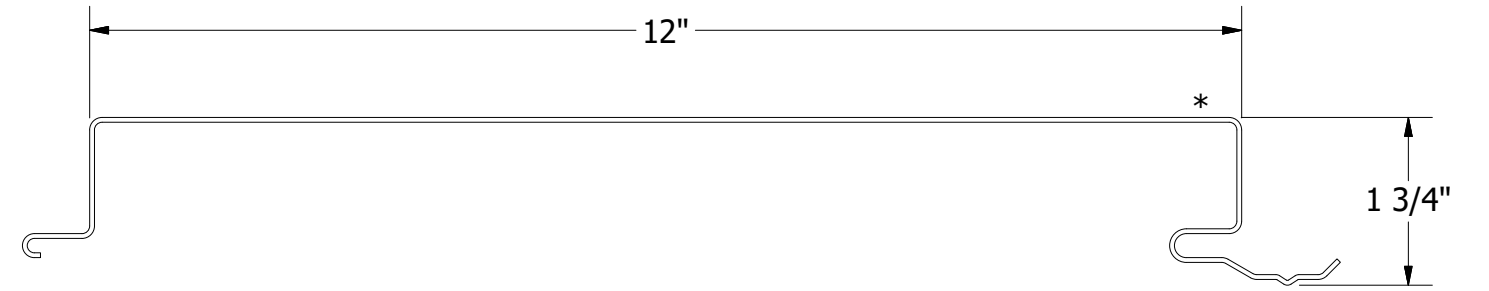
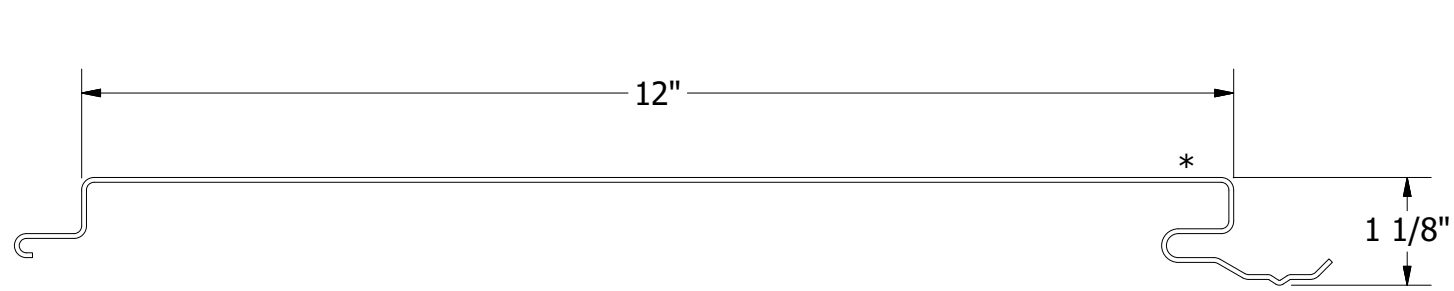
Note: * denotes color side.



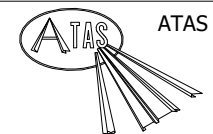
ATAS INTERNATIONAL, INC
 Allentown PA
 610-395-8445
 Mesa AZ
 480-558-7210

TITLE			
Design Wall Endwall Soffit Detail			
DWG. NO.	DR	RPS	DATE
	APP		7/3/2023
MATERIAL		SH. SIZE	SCALE
		B	X:X

REV. NO.	DATE	DESCRIPTION OF REVISION	BY	APP



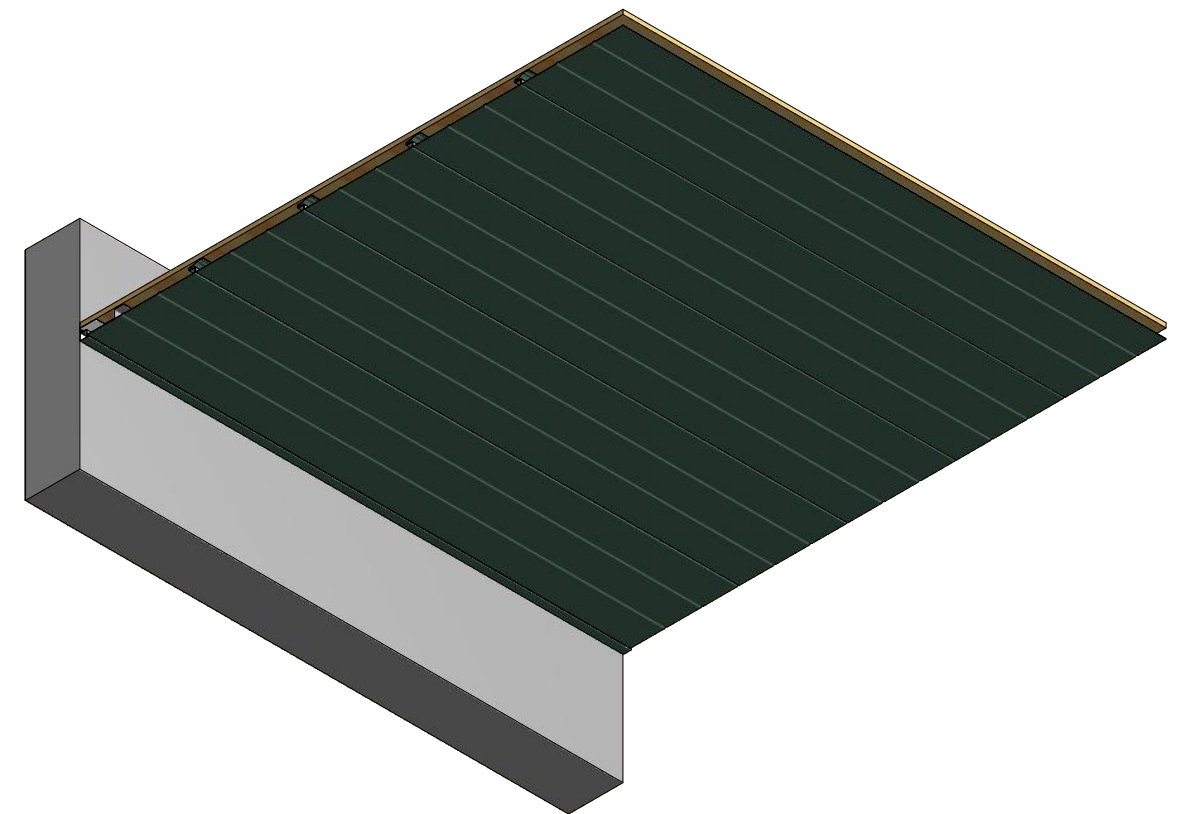
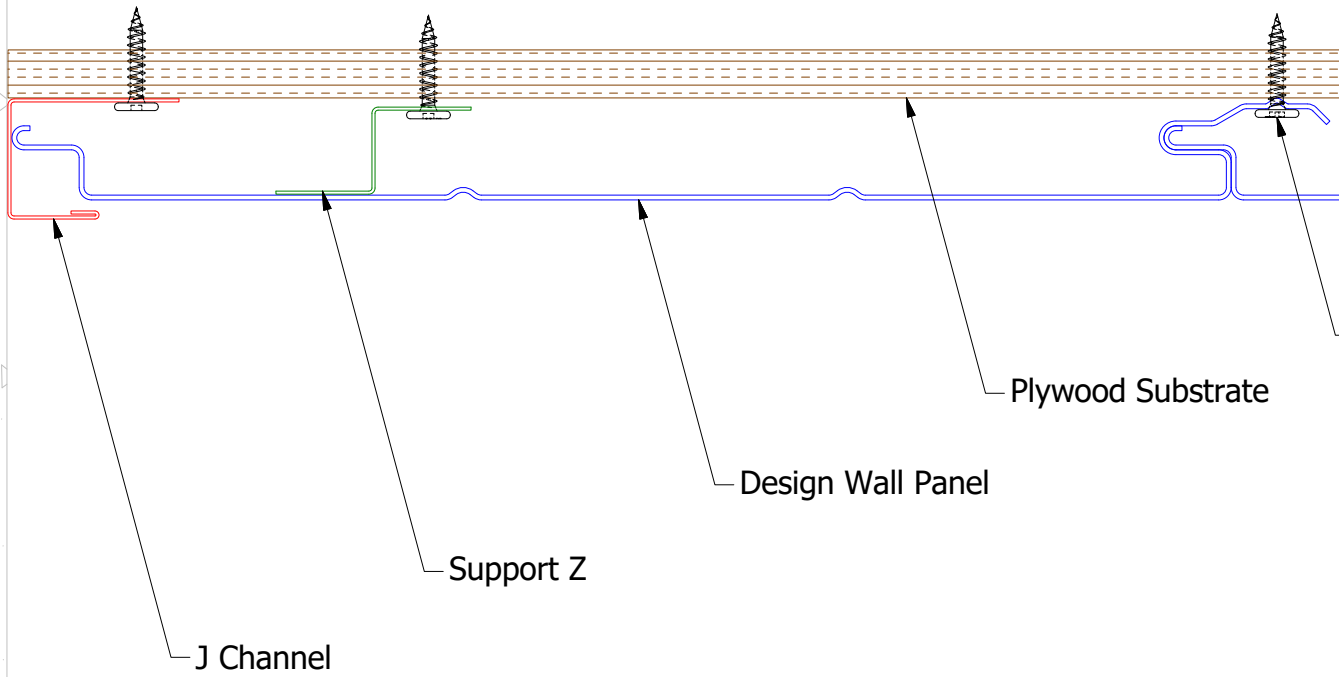
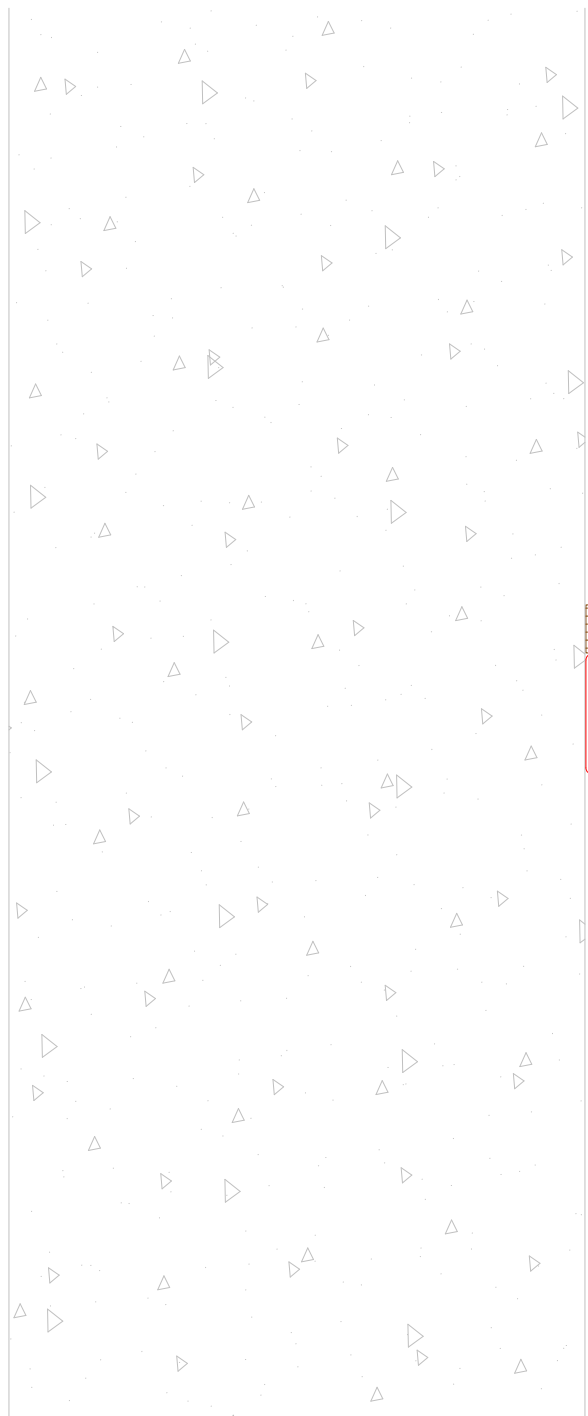
Note: * denotes color side.



ATAS INTERNATIONAL, INC
 Allentown PA
 610-395-8445
 Mesa AZ
 480-558-7210

TITLE **Design Wall Panel Profile Detail**

REV. NO.	DATE	DESCRIPTION OF REVISION	BY	APP	DWG. NO.	DR	DATE
						KRK	6/3/2024
					MATERIAL	APP	DATE
					SH. SIZE	B	SCALE
							X:X



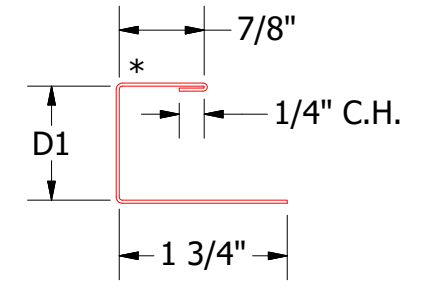
#10 x 1" Wafer Head Fastener

Plywood Substrate

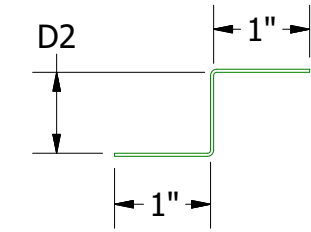
Design Wall Panel

Support Z

J Channel



J Channel
 DWA118: D1= 1 1/8"
 DSA178: D1= 1 7/8"

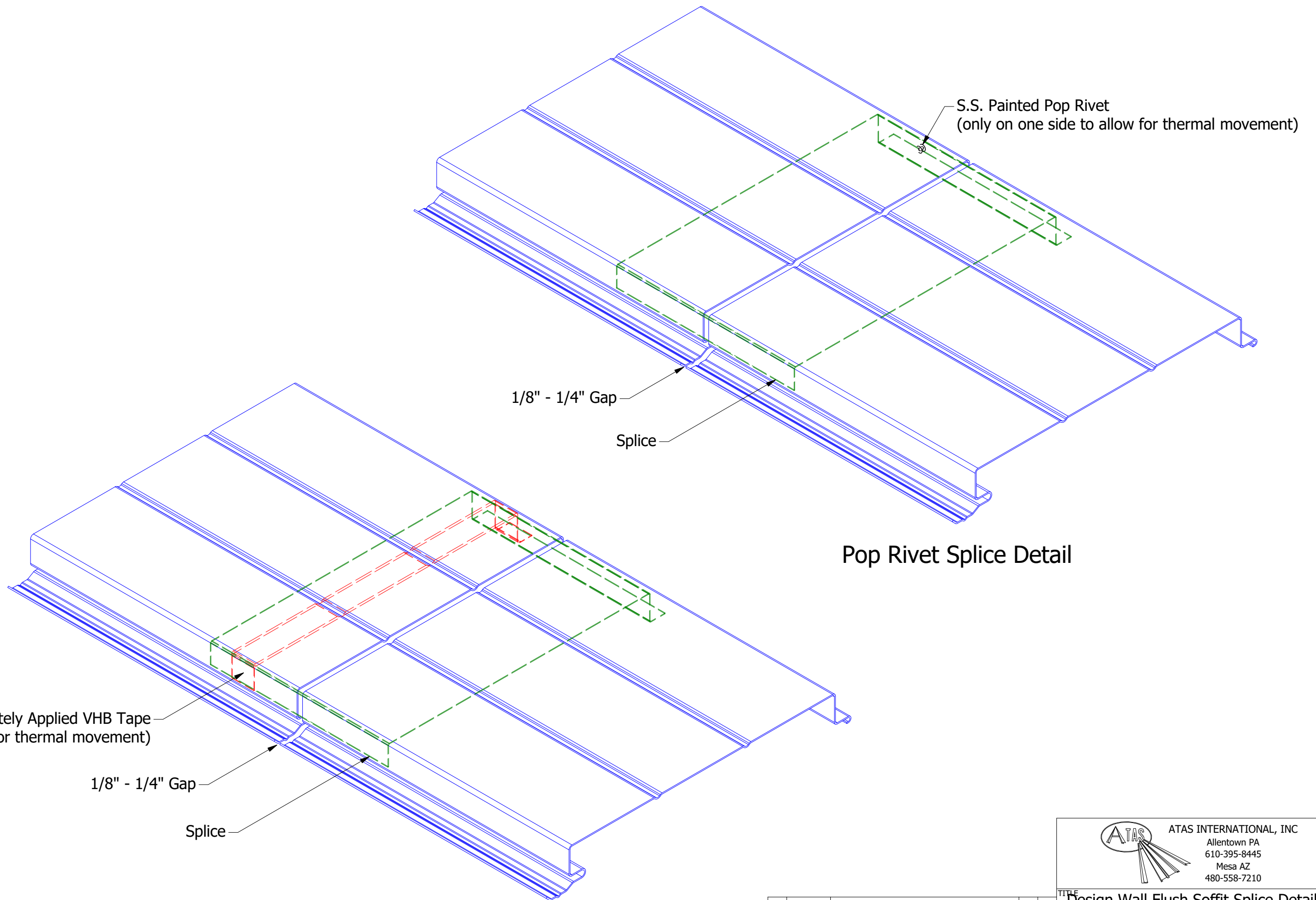


Support Z
 DWA681: D2 = 1"
 DSA681: D2 = 1 5/8"

Note: * denotes color side.

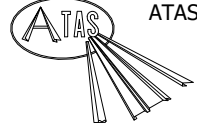
ATAS ATAS INTERNATIONAL, INC
 Allentown PA
 610-395-8445
 Mesa AZ
 480-558-7210

TITLE				Design Wall Starting Endwall Soffit			
REV. NO.		DATE		DR		DATE	
				RPS		7/3/2023	
				APP		DATE	
				SH. SIZE		SCALE	
				B		X:X	



Pop Rivet Splice Detail

VHB Tape Splice Detail

 ATAS INTERNATIONAL, INC Allentown PA 610-395-8445 Mesa AZ 480-558-7210		TITLE Design Wall Flush Soffit Splice Detail	
		DWG. NO.	DR KRK APP
REV. NO.	DATE	DESCRIPTION OF REVISION	BY APP SH. SIZE B SCALE X:X