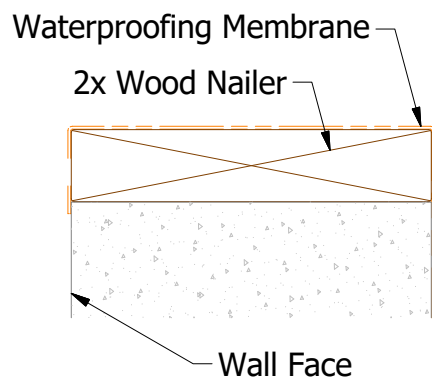
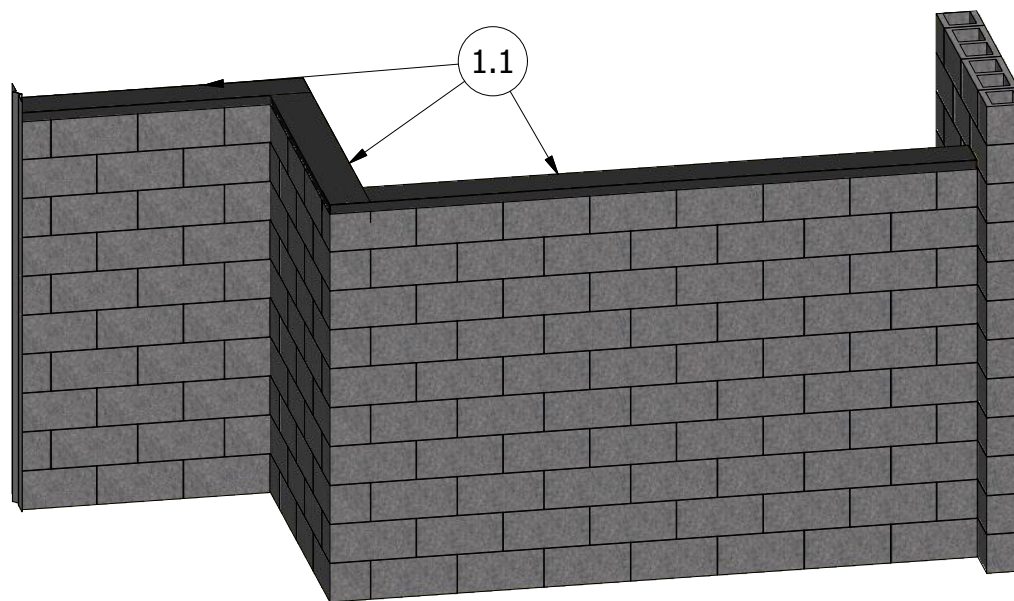


**Step 1.1** Check to make sure wood nailer and waterproofing membrane are installed correctly.

**Note:** Wood Nailer should be installed flush with the face of the Wall. Waterproofing Membrane should extend below the nailer at the Face.

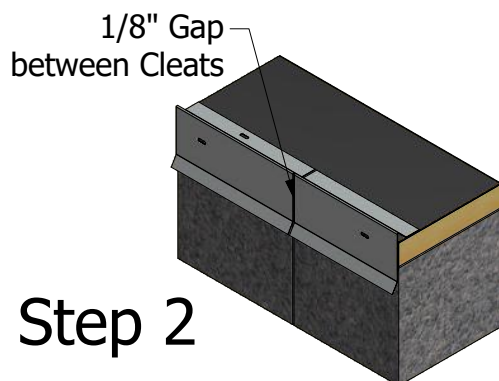
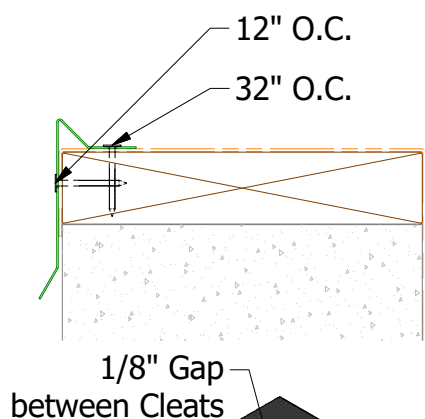


## Step 1

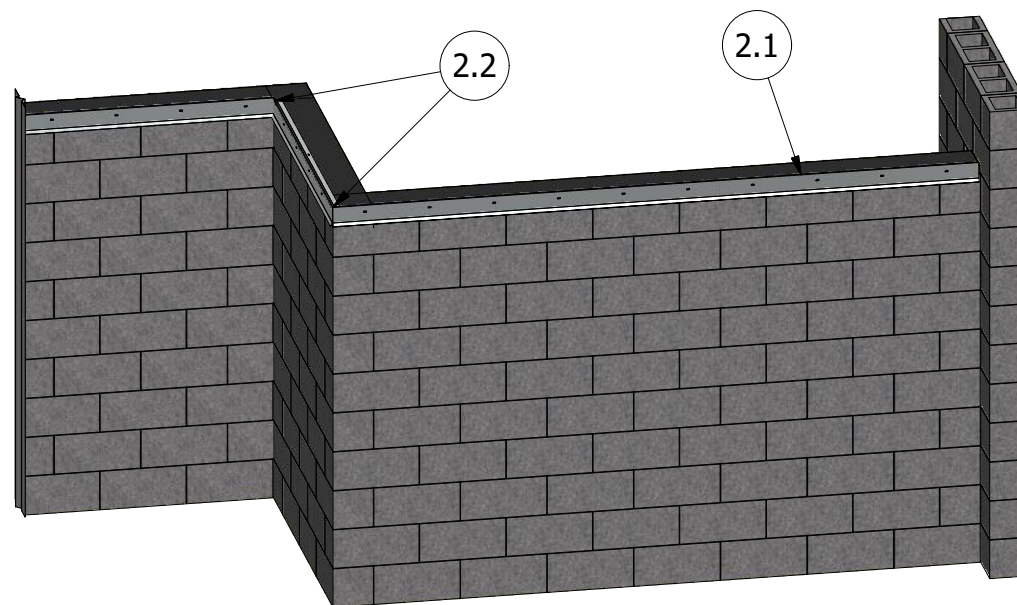


**Step 2.1** Install Continuous Cleat on Top of the Front Face of the Wall with Ring Shank Nails at 12" O.C. through pre-punched slots in the face and at 32" O.C. through pre-punched slotted holes in the top flange.

**Step 2.2** At Outside Corner, Field Miter Continuous Cleats to sit Flush together and at Inside Corner, Run Continuous Cleats to sit Flush together.

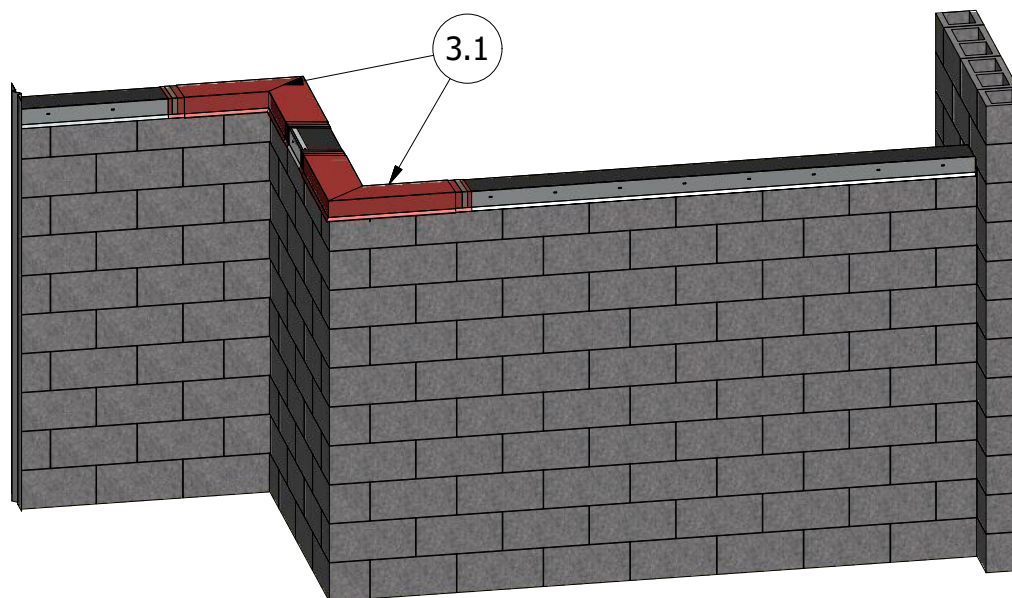
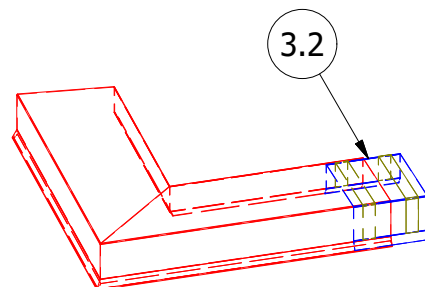


## Step 2



**Step 3.1** Install Inside and Outside Mitered Corners on Continuous Cleats, securing the back side with #9 x 1 1/2" Screws through pre-punched slots.

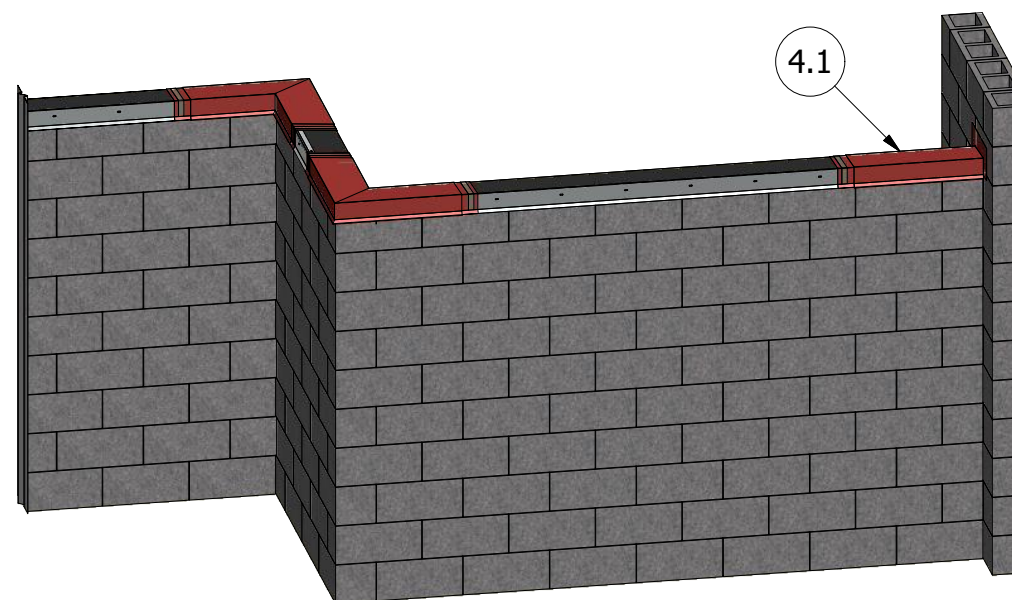
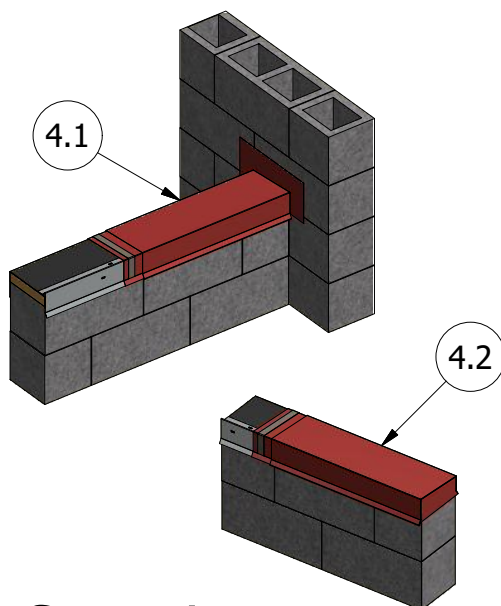
**Step 3.2** While installing Mitered Corners, install concealed interior Splices with Sealant as shown.



## Step 3

**Step 4.1** When Ending Coping into another wall use Factory installed End Term Section.

**Step 4.2** When Ending Coping at wall end use Factory Installed End Closure Section.

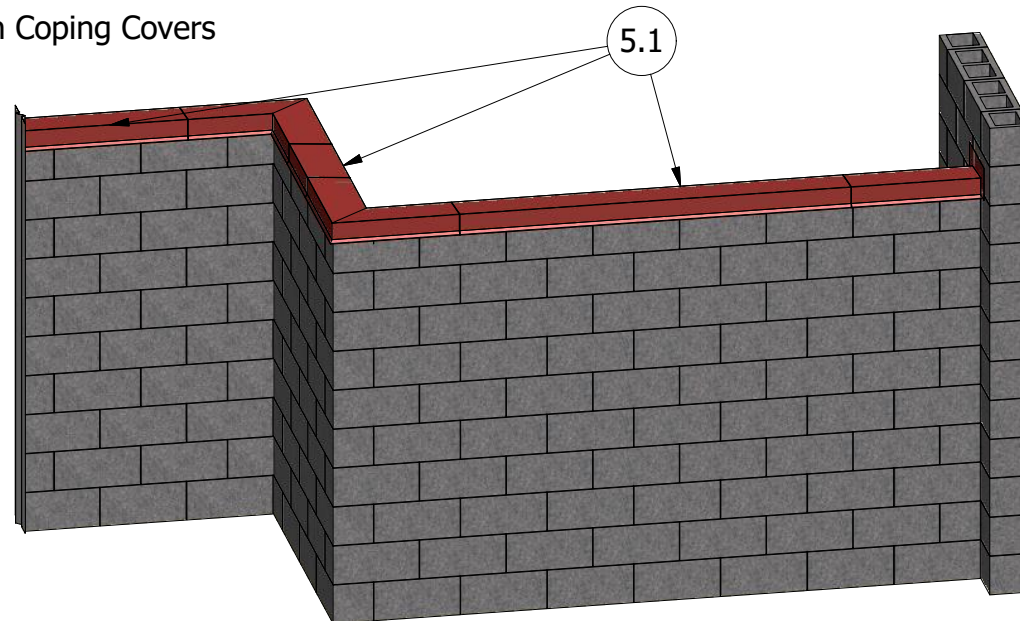
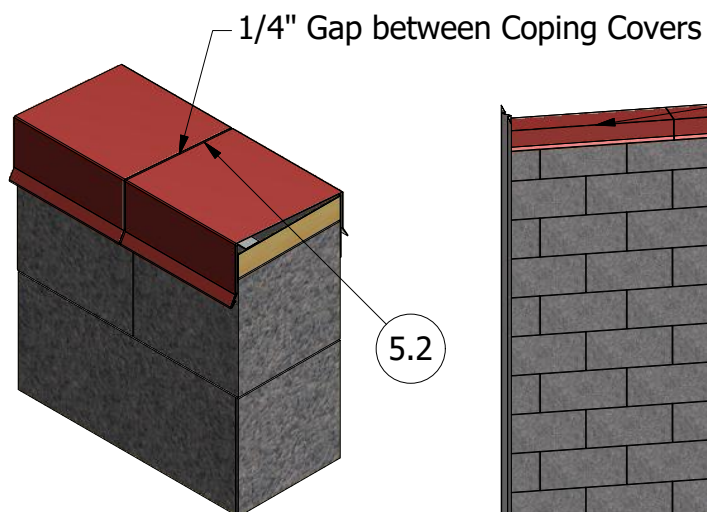


## Step 4



**Step 5.1** Install Coping Cover and secure with Appropriate Fasteners as shown.

**Step 5.2** For longer continuous runs of Coping Covers, use splices with Sealant to join together.

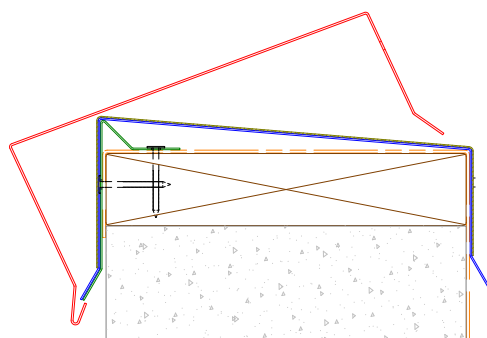


## Step 5

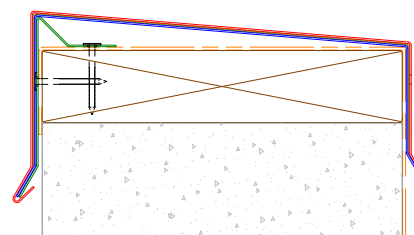
## Additional Details

For more information, please visit:

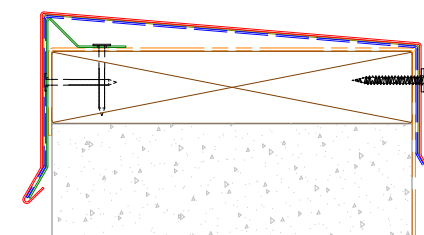
[www.atas.com](http://www.atas.com)



Engage Coping Cover Hem onto Cleat as shown.



Roll Coping Cover back onto the Wall Assembly.



Secure back of Coping Cover with #9 x 1 1/2" Screws through pre-punched slots at 17" O.C.

22 GA Cleat  
4"-10"

22 GA Cleat  
10"-24"