

Method as illustrated above.

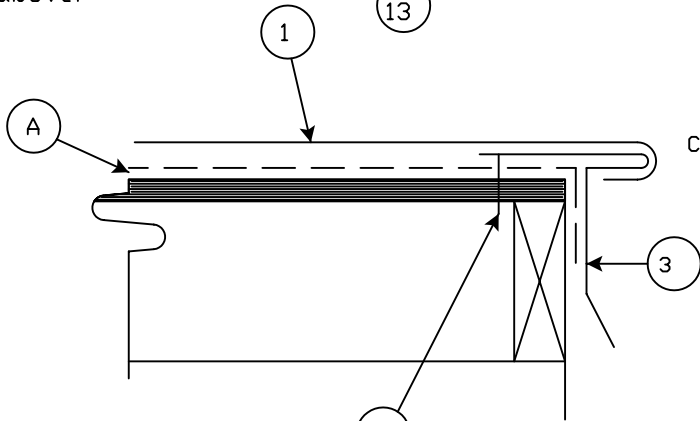
REFERENCE:

A. As supplied by ATAS:

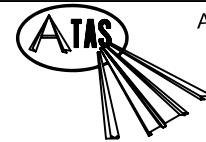
- #1A - HSS163 - ATAS 16' X 36' STANDING SEAM SHINGLE PANEL
- #1B - HSS166 - ATAS 16' x 60' STANDING SEAM SHINGLE PANEL
- #3 - HSA112 - Drip Edge
- #4 - HSA134 - Gable/Sidewall Trim (Utility Cleat)
- #13 - RSS210 - #10 x 1" Wafer Headed Wood Screws

C. As supplied by others - not ATAS direct:

- "A" - Felt overlayment
- "H" - Appropriate Sealant (Caulk, Double-Faced Caulk Tape, Etc.)



Alternate method
Field bend panel
edge over part
#3.



ATAS INTERNATIONAL, INC.
Allentown PA
610-395-8445
Mesa AZ
480-558-7210

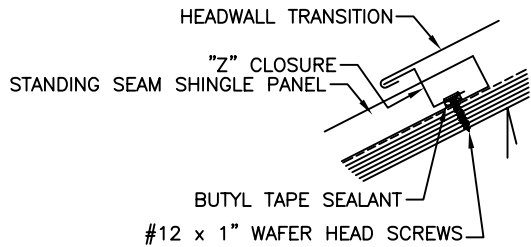
TITLE Standing Seam Shingle Gable Detail

DWG NO. / FILE NO. Standing Seam Shingle Gable Detail SCALE 3"=1'-0"

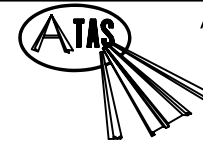
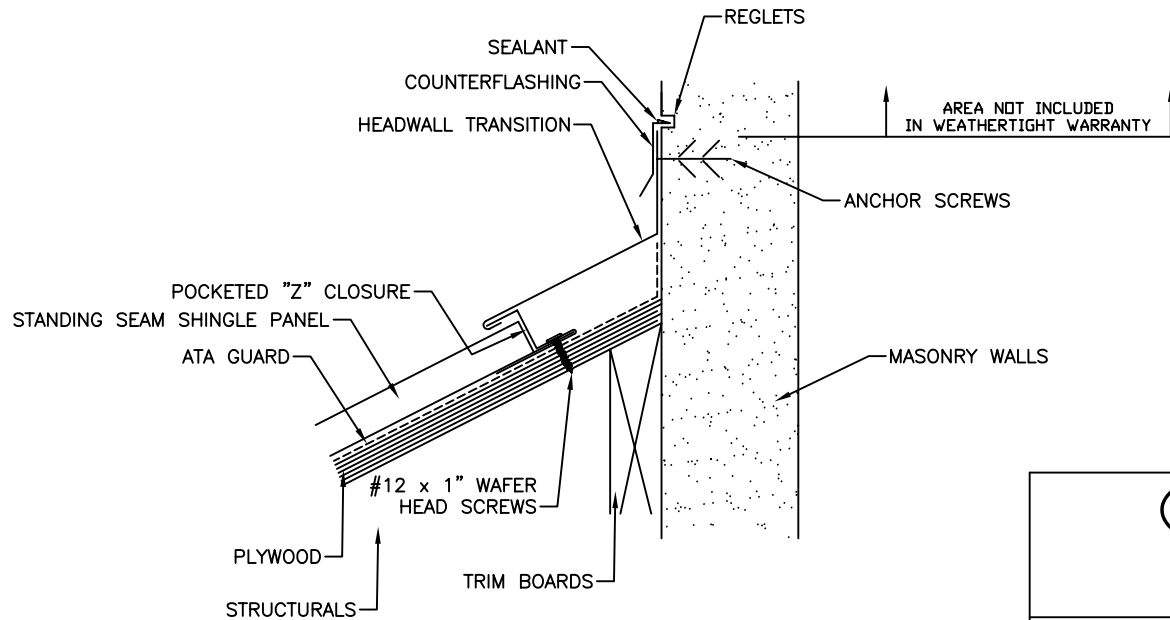
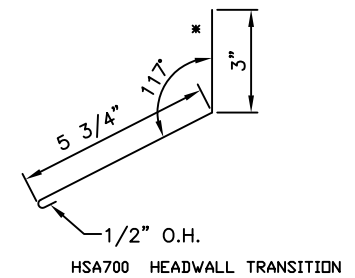
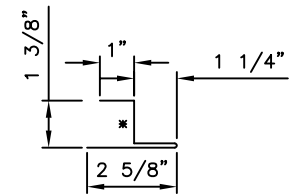
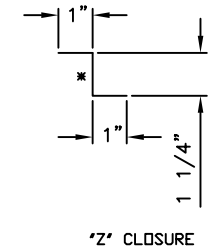
DRAWN BY DAS DATE 8-3-07 APPR. BY JEB DATE 8-3-07

REVISION NO. XXXX REVISION DATE MM/DD/YY APPR. BY XXXX APPR. DATE MM/DD/YY

Rev. No.	Revision Date	Drawn By	Description of Revision
0	8-3-07	DAS	Standing Seam Shingle Gable Detail



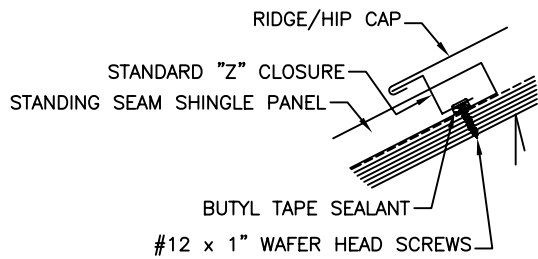
ALTERNATE - USE STANDARD "Z" CLOSURE IN PLACE OF
 POCKETED "Z" CLOSURE. POCKETED "Z" CLOSURE MUST
 BE CUT TO FIT BETWEEN THE SEAMS.



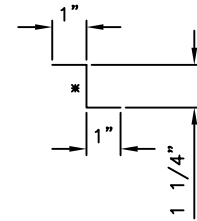
ATAS INTERNATIONAL, INC.
 Allentown PA
 610-395-8445
 Mesa AZ
 480-558-7210

TITLE		Standing Seam Headwall - ply			
DWG NO. / FILE NO.		Standing Seam Headwall - ply		SCALE	3"=1'-0"
DRAWN BY	DAS	DATE	3-6-06	APPR. BY	JEB
REVISION NO.	XXXX	REVISION DATE	MM/DD/YY	APPR. BY	XXXX
				DATE	6-5-06
				DATE	MM/DD/YY

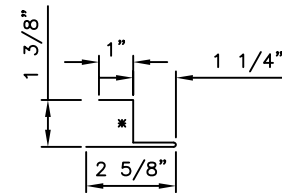
Rev. No.	Revision Date	Drawn By	Description of Revision
0	6-5-06	DAS	Standing Seam Headwall - ply



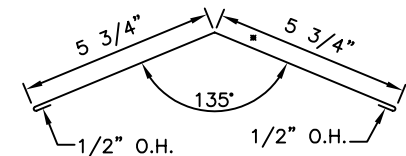
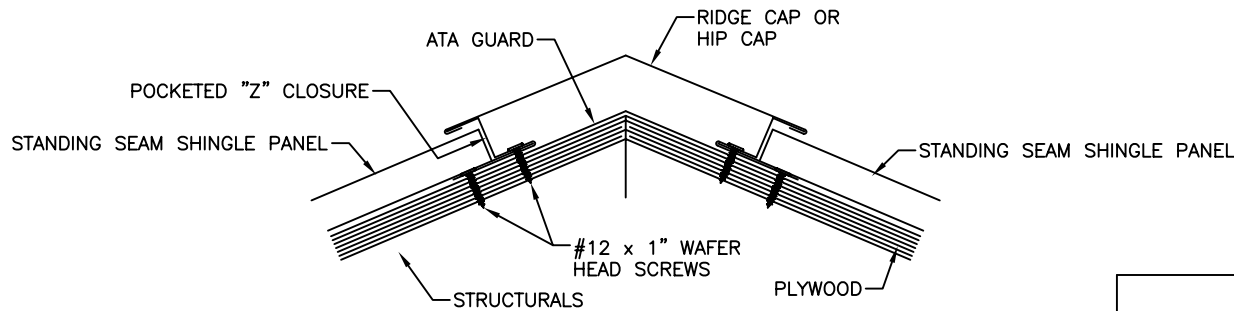
ALTERNATE - USE STANDARD 'Z' CLOSURE IN PLACE OF POCKETED 'Z' CLOSURE. POCKETED 'Z' CLOSURE MUST BE CUT TO FIT BETWEEN THE SEAMS.



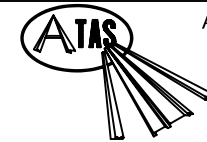
'Z' CLOSURE



HSA910 POCKETED 'Z' CLOSURE



HSA300 Ridge Cap
HSA300 Hip Cap

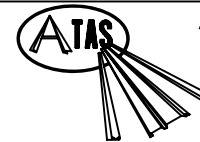
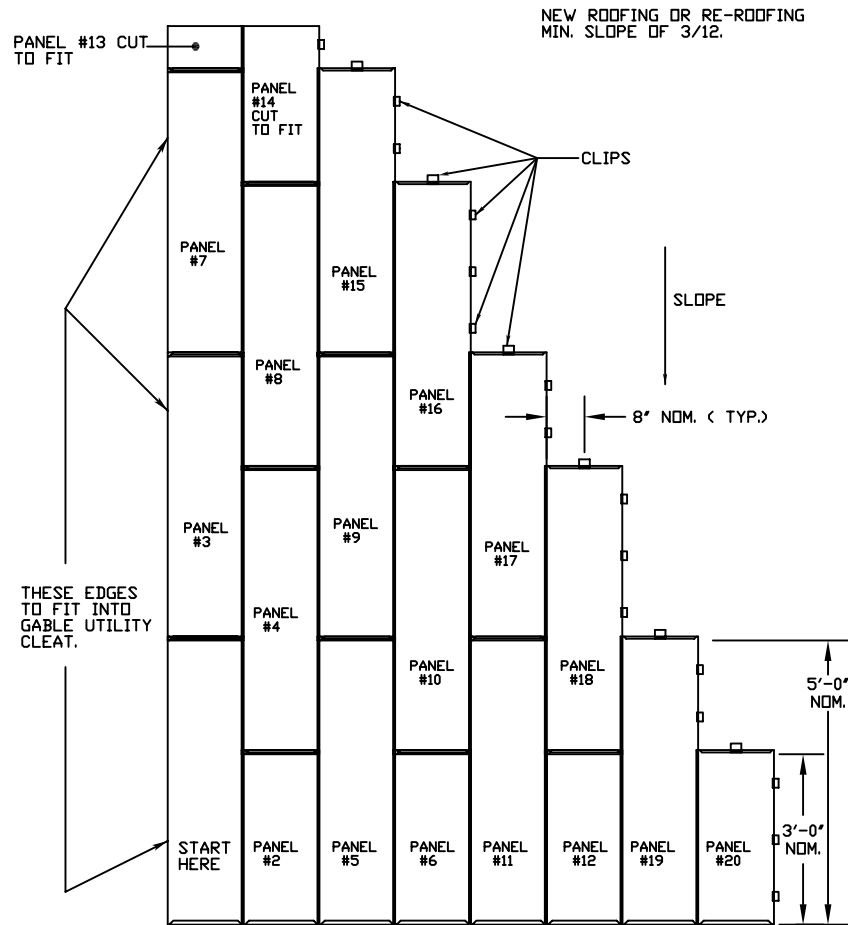


ATAS INTERNATIONAL, INC.

Allentown PA
610-395-8445
Mesa AZ
480-558-7210

TITLE		Standing Seam Hip Ridge - ply					
DWG NO. / FILE NO.		Standing Seam Hip Ridge - ply			SCALE	3"=1'-0"	
DRAWN BY	DAS	DATE	3-6-06	APPR. BY	JEB	DATE	6-5-06
REVISION NO.	XXXX	REVISION DATE	MM/DD/YY	APPR. BY	XXXX	APPR. DATE	MM/DD/YY

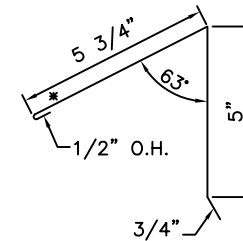
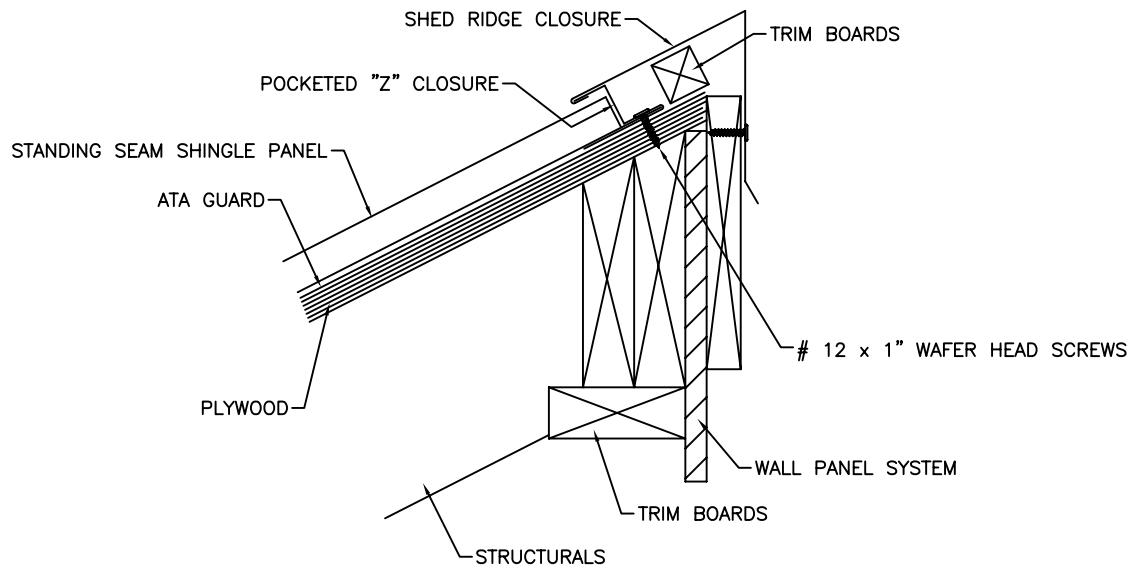
Rev. No.	Revision Date	Drawn By	Description of Revision
0	6-5-06	DAS	Standing Seam Hip Ridge - ply



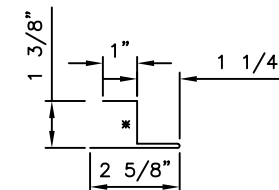
ATAS INTERNATIONAL, INC.
 Allentown PA
 610-395-8445
 Mesa AZ
 480-558-7210

TITLE		Standing Seam Installation					
DWG NO. / FILE NO.		Standing Seam Installation			SCALE	3"=1'-0"	
DRAWN BY	DAS	DATE	3-6-06	APPR. BY	JEB	DATE	6-5-06
REVISION NO.	XXXX	REVISION DATE	MM/DD/YY	APPR. BY	XXXX	APPR. DATE	MM/DD/YY

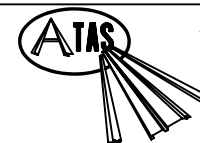
Rev. No.	Revision Date	Drawn By	Description of Revision
0	6-5-06	DAS	Standing Seam Installation



SHED RIDGE
HSA342- Roof Slopes



HSA910 POCKETED 'Z' CLOSURE



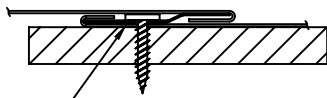
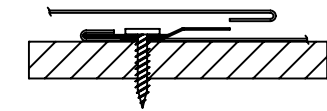
ATAS INTERNATIONAL, INC.
Allentown PA
610-395-8445
Mesa AZ
480-558-7210

TITLE		Standing Seam Shed Ridge - ply				
DWG NO. / FILE NO.	Standing Seam Shed Ridge - ply				SCALE	3"=1'-0"

DRAWN BY	DAS	DATE	3-6-06	APPR. BY	JEB	DATE	6-5-06
REVISION NO.	XXXX	REVISION DATE	MM/DD/YY	APPR. BY	XXXX	APPR. DATE	MM/DD/YY

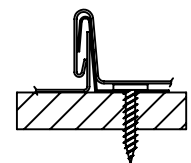
Rev. No.	Revision Date	Drawn By	Description of Revision
0	6-5-06	DAS	Standing Seam Shed Ridge - ply

STANDING SEAM SHINGLE FASTENING SCHEDULE

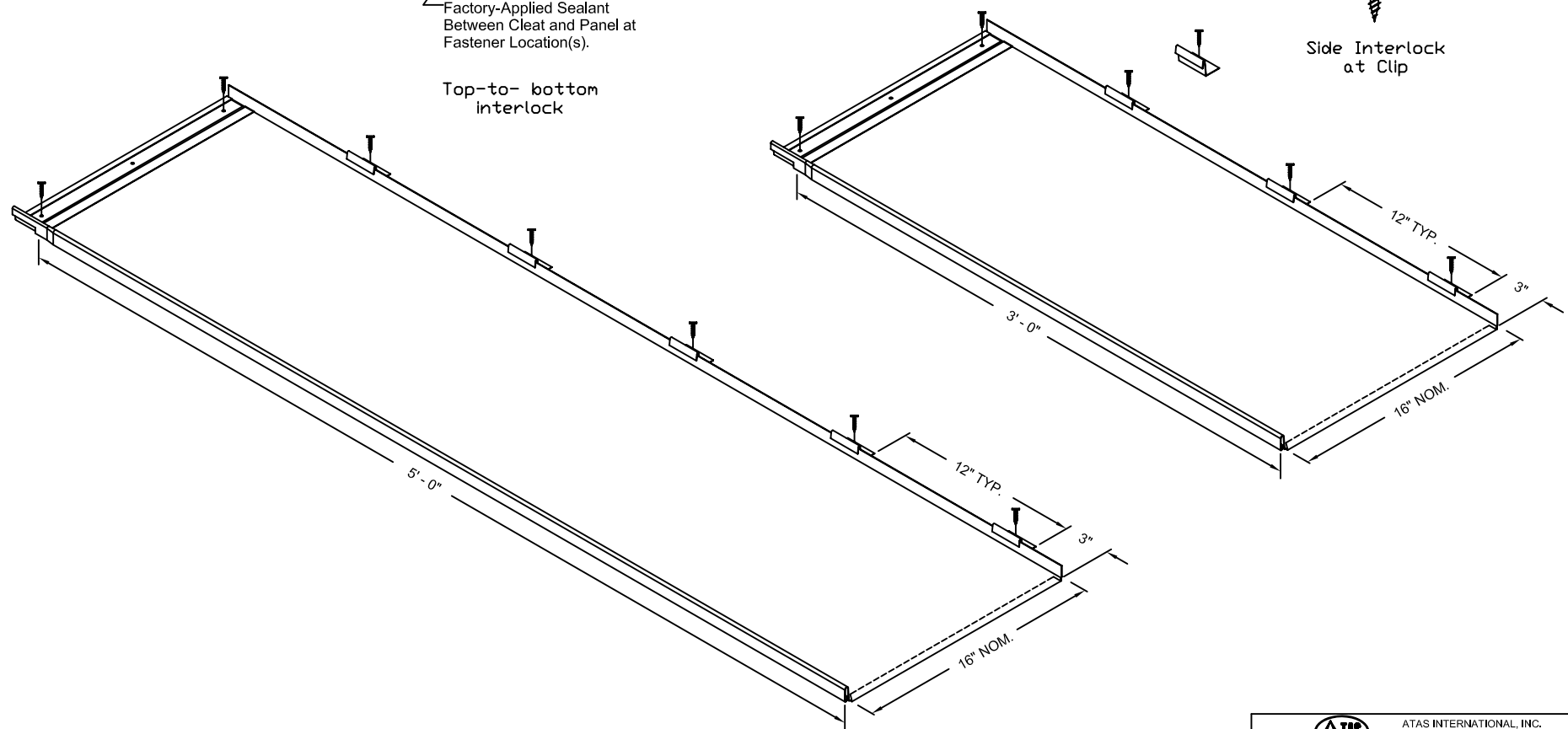


Factory-Applied Sealant
Between Cleat and Panel at
Fastener Location(s).


Top-to-bottom
interlock

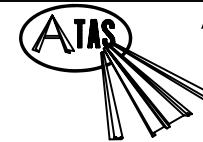
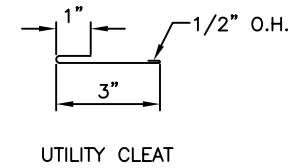
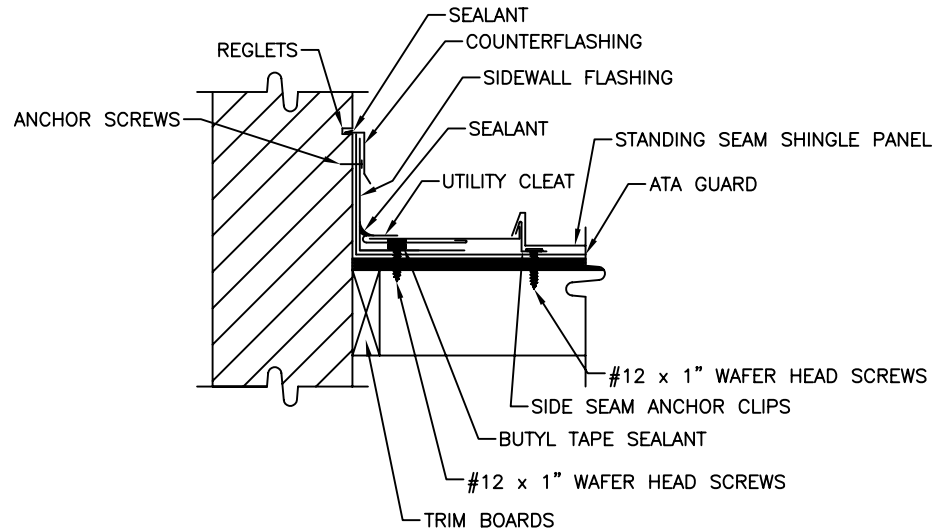


Side Interlock
at Clip



Rev. No.	Revision Date	Drawn By	Description of Revision
0	01/22/08	RRG	Approximate drawing based on "Isomet temp Install guide 7_6_08" but with 2" clips located as shown and 15 1/2" cleats. Also added detail for both top and side fasteners.

		ATAS INTERNATIONAL, INC. Allentown PA 610-395-8445 Mesa AZ 480-558-7210	
		TITLE INSTALLATION DRAWING FOR STANDING SEAM SHINGLE WITH 2" CLIPS	
DWG NO. / FILE NO.	Isomet temp install guide 1_22_08	SCALE	X:Y
DRAWN BY	RRG	DATE	01/22/08
APPR. BY	XXX	DATE	MM/DD/05
REVISION NO.	XX	REVISION DATE	MM/DD/YY
APPR. BY	XXXX	DATE	MM/DD/YY



ATAS INTERNATIONAL, INC.
 Allentown PA
 610-395-8445
 Mesa AZ
 480-558-7210

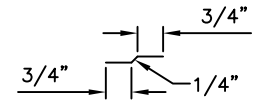
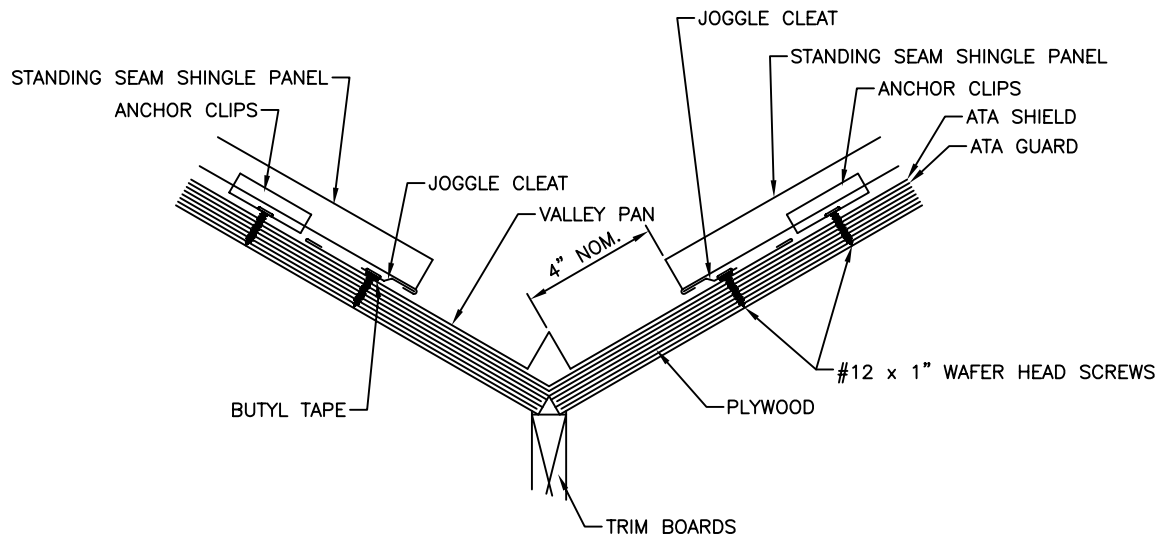
TITLE Standing Seam Sidewall Ridge - ply

DWG NO. / FILE NO. Standing Seam Sidewall Ridge - ply SCALE 3"=1'-0"

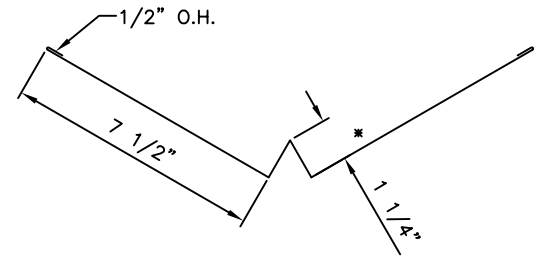
DRAWN BY DAS DATE 3-6-06 APPR. BY JEB DATE 6-5-06

REVISION NO. XXXX REVISION DATE MM/DD/YY APPR. BY XXXX APPR. DATE MM/DD/YY

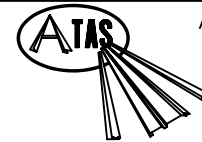
Rev. No.	Revision Date	Drawn By	Description of Revision
0	6-5-06	DAS	Standing Seam Sidewall Ridge - ply



HSA975 JOGGLE CLEAT



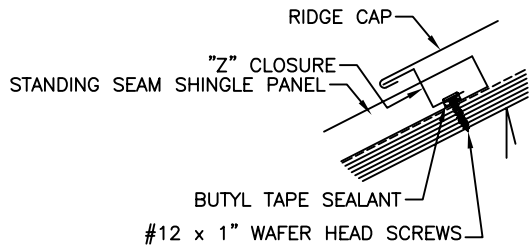
MDA800 VALLEY PAN



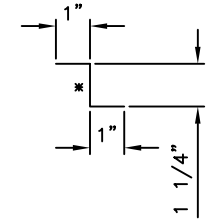
ATAS INTERNATIONAL, INC.
 Allentown PA
 610-395-8445
 Mesa AZ
 480-558-7210

TITLE								Standing Seam Valley - ply			
DWG NO. / FILE NO.				Standing Seam Valley - ply				SCALE		3"=1'-0"	
DRAWN BY	DAS	DATE	3-6-06	APPR. BY	JEB	DATE	6-5-06				
REVISION NO.	XXXX	REVISION DATE	MM/DD/YY	APPR. BY	XXXX	APPR. DATE	MM/DD/YY				

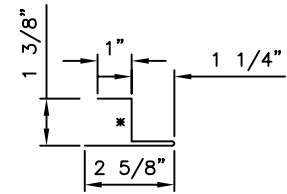
Rev. No.	Revision Date	Drawn By	Description of Revision
0	6-5-06	DAS	Standing Seam Valley - ply



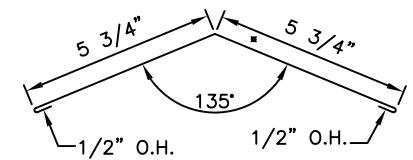
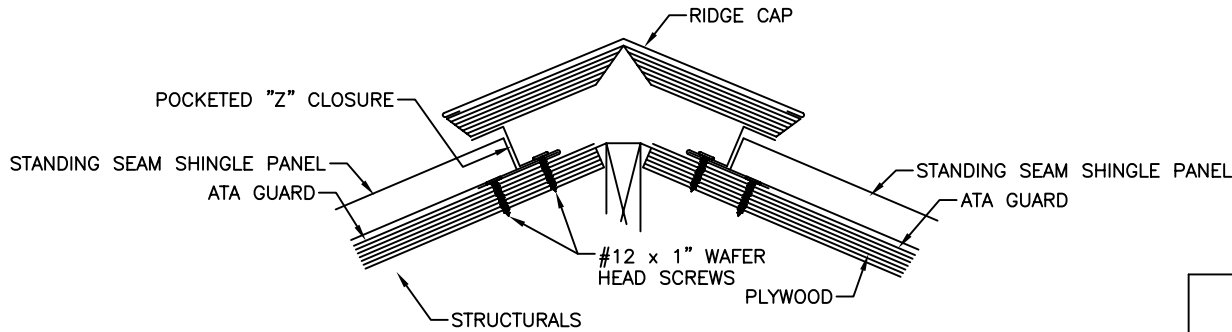
ALTERNATE - USE STANDARD 'Z' CLOSURE IN PLACE OF
POCKETED 'Z' CLOSURE. POCKETED 'Z' CLOSURE MUST
BE CUT TO FIT BETWEEN THE SEAMS.



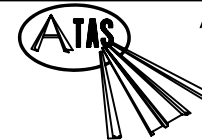
'Z' CLOSURE



HSA910 POCKETED 'Z' CLOSURE



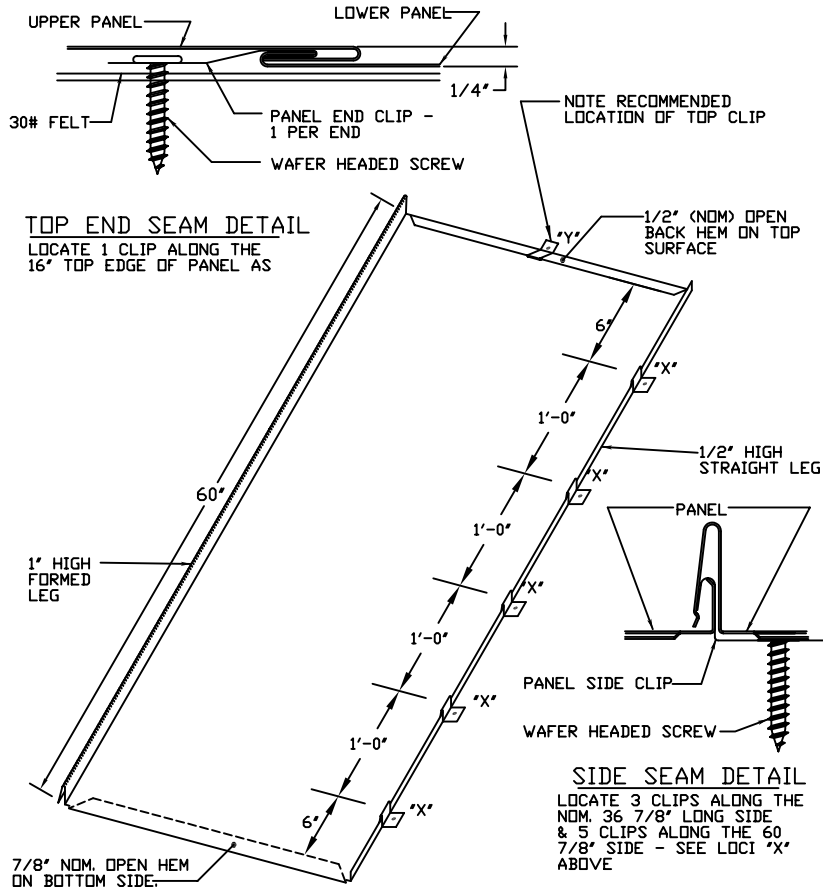
HSA300 Ridge Cap



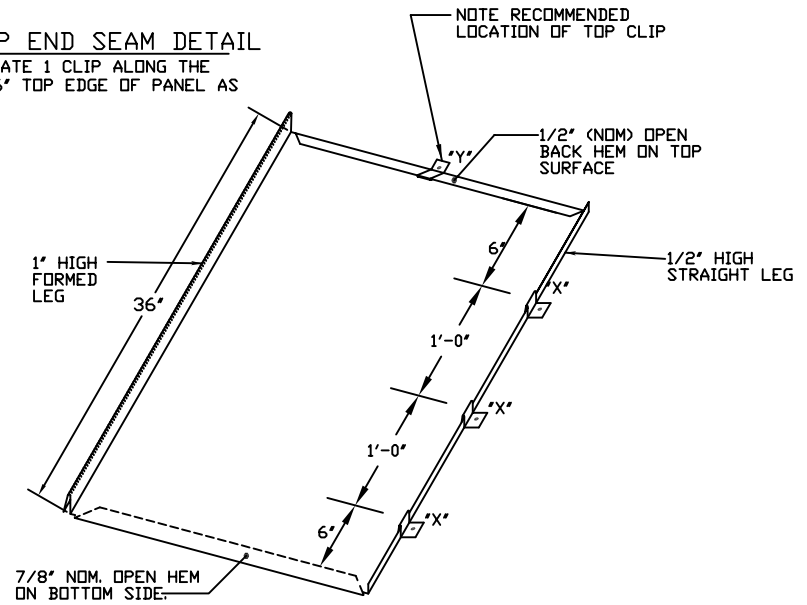
ATAS INTERNATIONAL, INC.
Allentown PA
610-395-8445
Mesa AZ
480-558-7210

TITLE		Standing Seam Vented Ridge - ply			
DWG NO. / FILE NO.	Standing Seam Vented Ridge - ply			SCALE	3"=1'-0"
DRAWN BY	DAS	DATE	3-6-06	APPR. BY	JEB
REVISION NO.	XXXX	REVISION DATE	MM/DD/YY	APPR. BY	XXXX
				DATE	6-5-06
				APPR. DATE	MM/DD/YY

Rev. No.	Revision Date	Drawn By	Description of Revision
0	6-5-06	DAS	Standing Seam Vented Ridge - ply

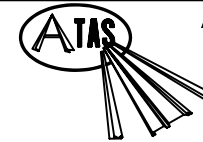


TOP END SEAM DETAIL
LOCATE 1 CLIP ALONG THE 16" TOP EDGE OF PANEL AS



STANDING SEAM SHINGLE PANELS

PANELS ARE 16" (NOM.) WIDE BY EITHER 36 7/8" LONG (36" NOM. COVERAGE) OR 60 7/8" LONG (60" NOM. COVERAGE).



ATAS INTERNATIONAL, INC.

Allentown PA
610-395-8445
Mesa AZ
480-558-7210

TITLE **Standing Seam Profile**

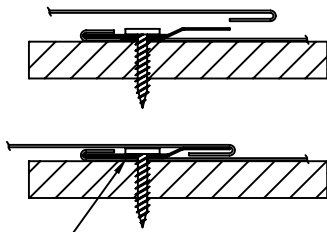
DWG NO. / FILE NO. **Standing Seam Profile** SCALE **3"=1'-0"**

DRAWN BY **DAS** DATE **7-24-07** APPR. BY **JEB** DATE **7-24-07**

REVISION NO. **XXXX** REVISION DATE **MM/DD/YY** APPR. BY **XXXX** APPR. DATE **MM/DD/YY**

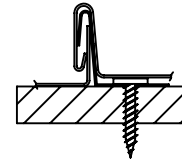
Rev. No.	Revision Date	Drawn By	Description of Revision
0	7-24-07	DAS	Standing Seam Profile

STANDING SEAM SHINGLE FASTENING SCHEDULE

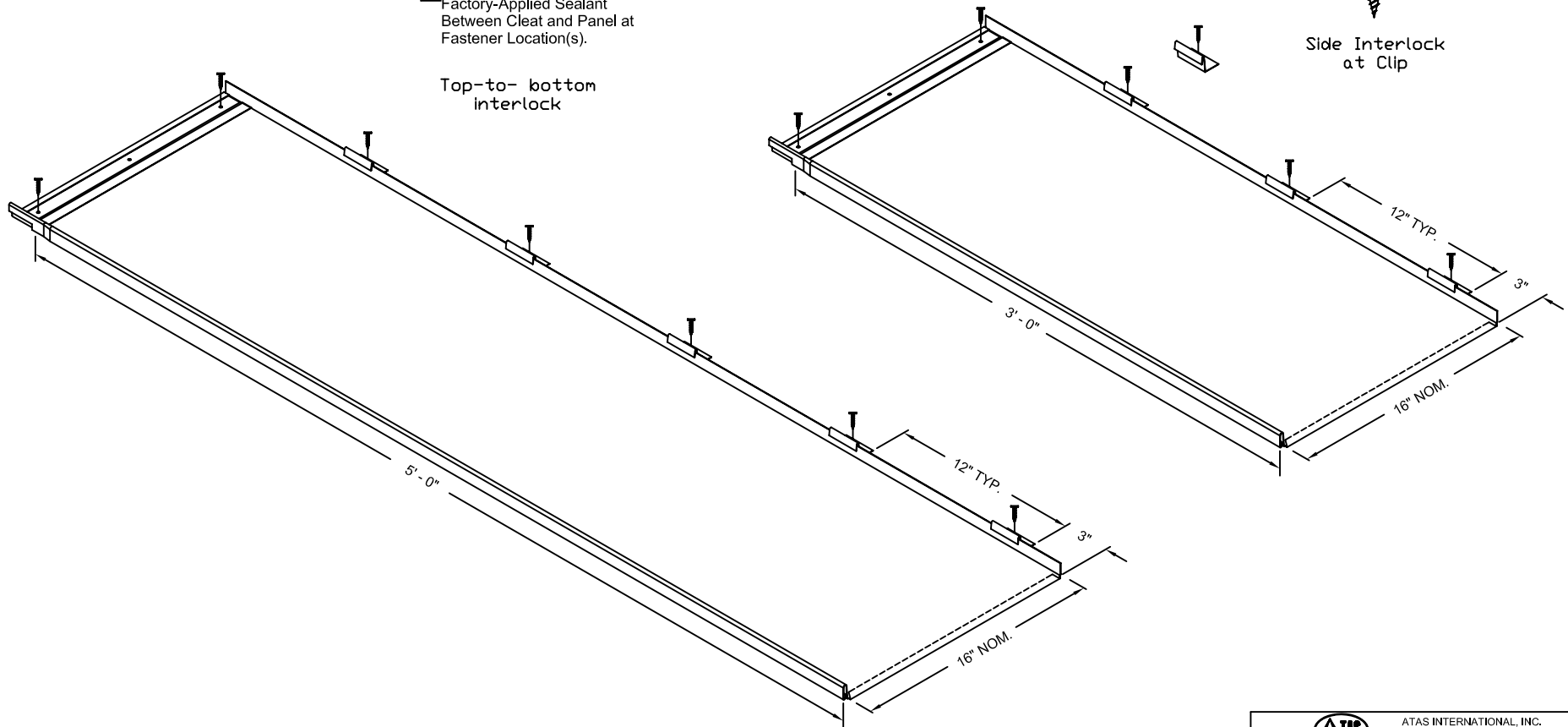


Factory-Applied Sealant
Between Cleat and Panel at
Fastener Location(s).


Top-to-bottom
interlock



Side Interlock
at Clip



Rev. No.	Revision Date	Drawn By	Description of Revision
0	01/22/08	RRG	Approximate drawing based on "Isomet temp Install guide 7_6_08" but with 2" clips located as shown and 15 1/2" cleats. Also added detail for both top and side fasteners.

		ATAS INTERNATIONAL, INC. Allentown PA 610-395-8445 Mesa AZ 480-558-7210	
		INSTALLATION DRAWING FOR STANDING SEAM SHINGLE WITH 2" CLIPS	
DWG NO. / FILE NO.	Isomet temp install guide 1_22_08	SCALE	X:Y
DRAWN BY	RRG	DATE	01/22/08
APPR. BY	XXX	DATE	MM/DD/05
REVISION NO.	XX	REVISION DATE	MM/DD/YY
APPR. BY	XXXX	DATE	MM/DD/YY