

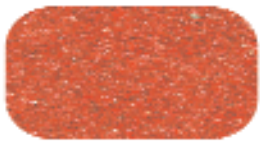


GRANUTILE

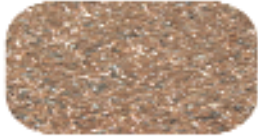
Stone
Coated
Metal

Granutiles is a modular, simulated low tile panel with a unique granular surface. The panel is installed ridge to eave, and is easily stocked and handled. The panel is coated with crushed stone chips with an acrylic over-glaze.





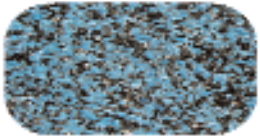
MISSION RED (08)



MAHOGANY (61)



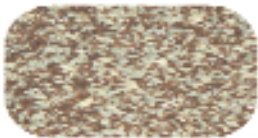
SLATE (38)



MIDNIGHT BLUE (65)



TERRA COTTA (32)



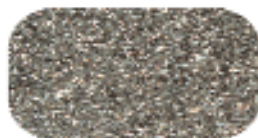
WEATHERED WOOD (34)



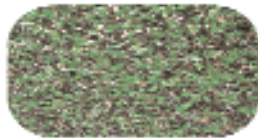
TIMBERWOOD (33)



GRANITE (63)



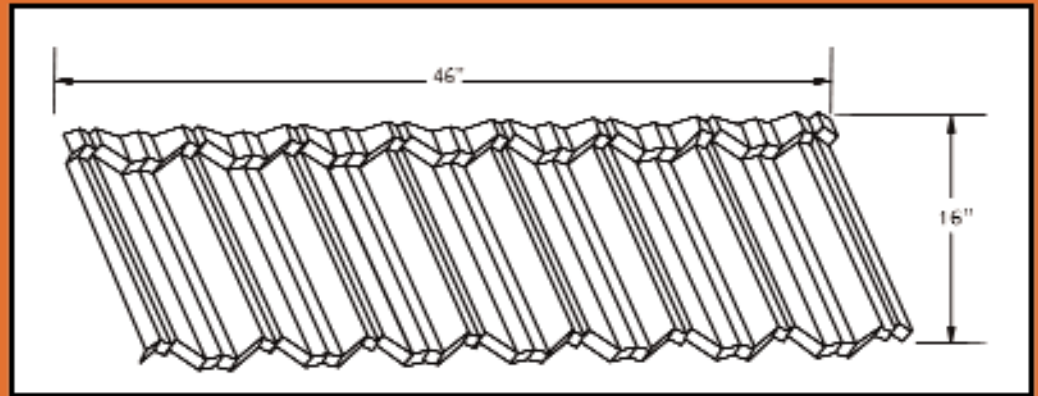
CHARCOAL (62)



FOREST GREEN (11)

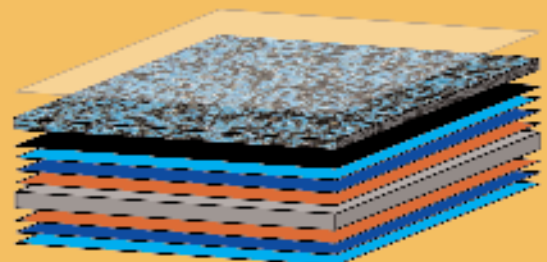
- Tile Facsimile Metal Roof Panels with a Unique Surface Texture
- Corrosion Resistant Steel Base, with Primer Coat, Styrene Acrylic Resin, Crushed Stone Chips and an Acrylic Topcoat
- Installed Horizontally from Ridge to Eave Over 2" x 2" Purlins
- Can Withstand High Winds, Torrential Rains, Hail, and Heavy Snow Loads; Not Affected by Freeze and Thaw Cycles

- Will Resist Fire – Cannot Burn or Support Combustion
- Lightweight – Ideal for Re-Roofing; May Often be Applied Over Existing Roof
- Will Provide Security with a Minimum of Maintenance
- Ecologically Sound – Will Not Deplete Forests or Oil Reserves
- Recyclable Metal – Will Not Contribute to Landfills
- Available in Ten Colors to Complement Any Structure
- Attractive from Any Angle
- UL 2218 Class 4 Impact Resistance



SKU: HGT144
 Actual Size: 46" x 16" with a 7 tile design repeat
 Exposure: 43.75" x 14.5"; 4.4 sq. ft./panel
 Base Metal: AZ 50 55% Al-Zn alloy coated Steel
 Weight: 140 lbs. per 100 sq. ft.; approx. 6 lbs. per panel
 Granules: Colored ground stone sealed with a clear polymer.
 Colors: Mahogany, Charcoal, Granite, Forest Green, Midnight Blue, Mission Red, Terra Cotta, Timberwood, Weathered Wood, Slate
 Minimum Pitch: 3:12

- Clear Polymer
- Stone Granules
- Acrylic Base Coat
- Primer
- Pretreatment
- Metallic Coating
- Base Metal
- Metallic Coating
- Pretreatment
- Primer



ATAS International, Inc.
 Allentown, PA ~ Mesa, AZ ~ Maryville, TN

6612 Snowdrift Rd.
 Allentown, PA 18106
 800.468.1441 ~ info@atas.com
 www.atas.com/granutile