

Method as illustrated above.

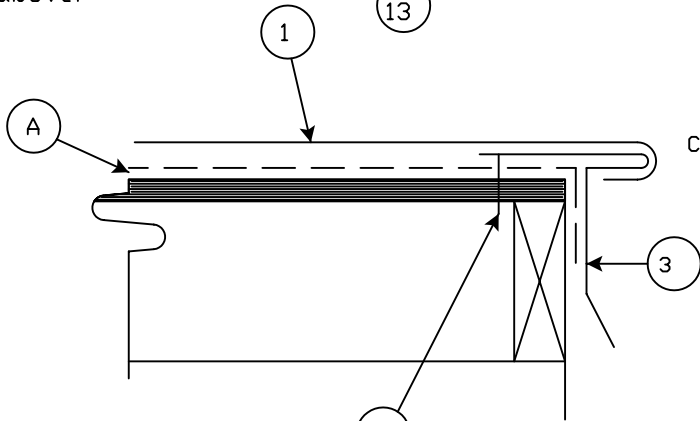
REFERENCE:

A. As supplied by ATAS:

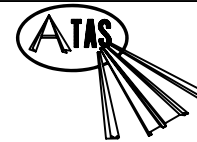
- #1A - HSS163 - ATAS 16' X 36' STANDING SEAM SHINGLE PANEL
- #1B - HSS166 - ATAS 16' x 60' STANDING SEAM SHINGLE PANEL
- #3 - HSA112 - Drip Edge
- #4 - HSA134 - Gable/Sidewall Trim (Utility Cleat)
- #13 - RSS210 - #10 x 1" Wafer Headed Wood Screws

C. As supplied by others - not ATAS direct:

- "A" - Felt overlayment
- "H" - Appropriate Sealant (Caulk, Double-Faced Caulk Tape, Etc.)



Alternate method  
Field bend panel  
edge over part  
#3.



ATAS INTERNATIONAL, INC.  
Allentown PA  
610-395-8445  
Mesa AZ  
480-558-7210

TITLE		Standing Seam Shingle Gable Detail				
DWG NO. / FILE NO.	Standing Seam Shingle Gable Detail				SCALE	3"=1'-0"

DRAWN BY	DAS	DATE	8-3-07	APPR. BY	JEB	DATE	8-3-07
REVISION NO.	XXXX	REVISION DATE	MM/DD/YY	APPR. BY	XXXX	APPR. DATE	MM/DD/YY

Rev. No.	Revision Date	Drawn By	Description of Revision
0	8-3-07	DAS	Standing Seam Shingle Gable Detail