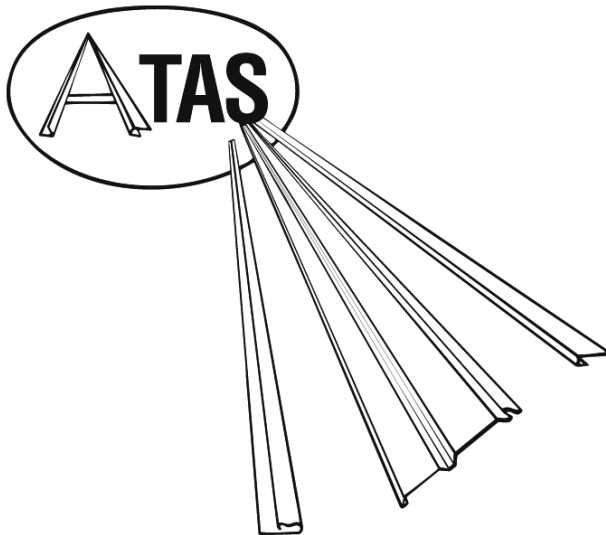


ATAS INTERNATIONAL, INC.

INSTALLATION SUGGESTIONS FOR SQUARE/RECTANGLE PENETRATIONS IN VERTICALLY INSTALLED

METAL ROOF PANELS



The information in this guide has been prepared as suggested details for square penetrations such as skylights and chimneys, (4 ft. MAX. width). Professionals, qualified to assess the information in this guide regarding suitability for a specific project, should determine the appropriateness thereof. Those individuals should verify that the selection and installation is made according to their requirements. ATAS INTERNATIONAL, INC. (ATAS) cannot assume any responsibility for actual selection and / or installation of materials.

The installation suggestions can be adapted to all standing seam or batten panels from 1/2" to 2 1/2" high. Adjustments should be made in the height of the receiving channel and the "Z's". The actual unit must be installed to accommodate natural drainage over the top of the metal roof panel.

ATAS International, Inc.

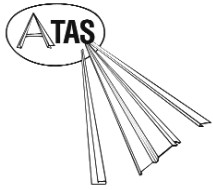
www.atas.com
email: info@atas.com
(800)468-1441

6612 Snowdrift Road
Allentown, PA 18106
Ph. (610) 395-8445
Fax: (610) 395-9342

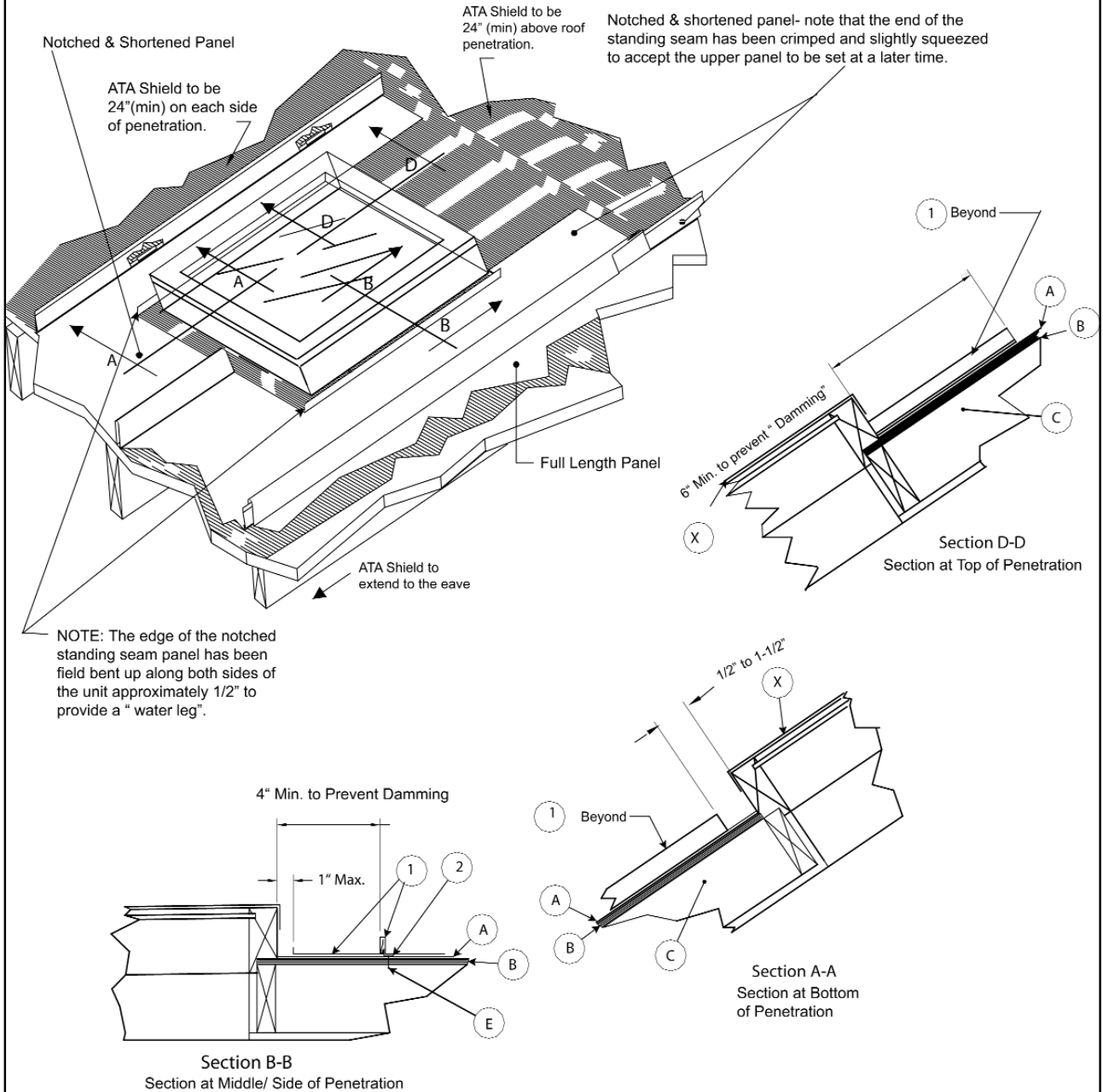
Mesa, Arizona
Ph: (480) 558-7210
Fax: (480) 558- 7217

Maryville, Tennessee
(800)468-1441

Allentown, PA 18106
 ph:(800)468-1441
 info@atas.com
 fax:(610)395-9342



PENETRATIONS - I

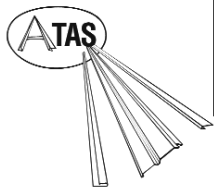


Reference

A. As Supplied by ATAS
 #1 - Standing Seam Panels
 #2 - Anchor Clip

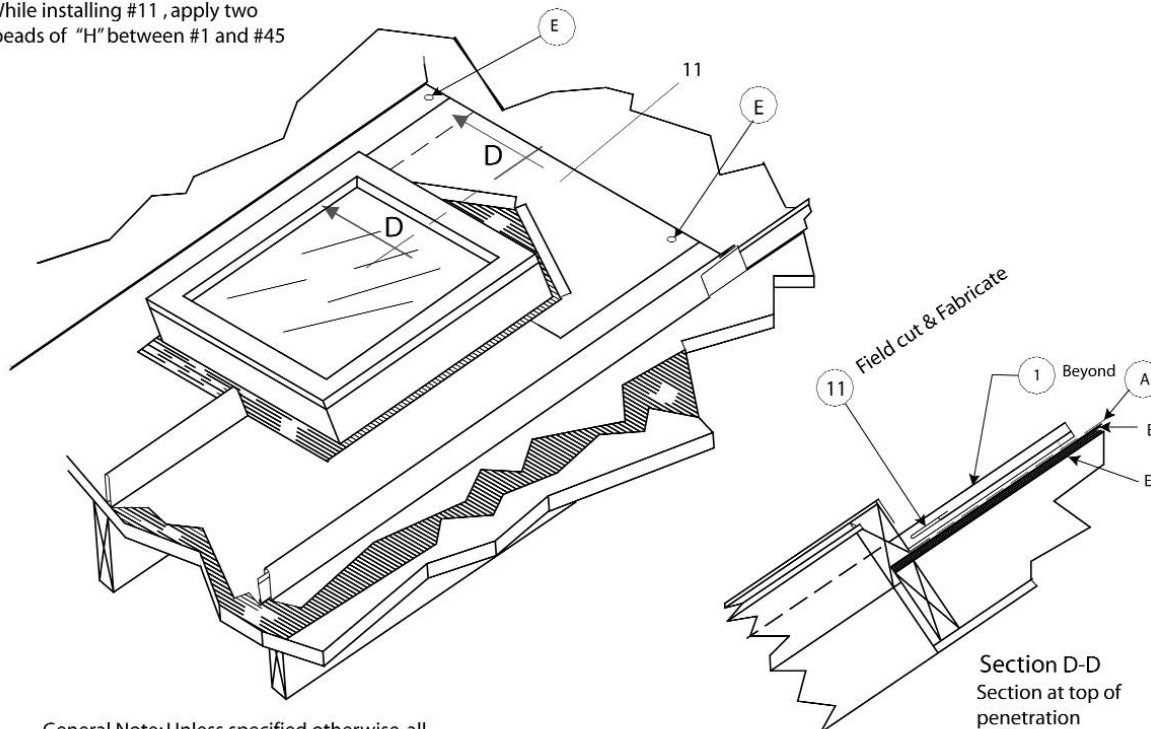
B. As Supplied by Others
 "A" - ATA- Guard or equal
 "B" - 5/8" min. roof sheathing
 "C" - Structural
 "E" - #10 x 1" Wafer Head Screws
 "X" - Square/Rectangle penetration with trim and counterflashing

Allentown, PA 18106
 ph:(800)468-1441
 info@atas.com
 fax:(610)395-9342

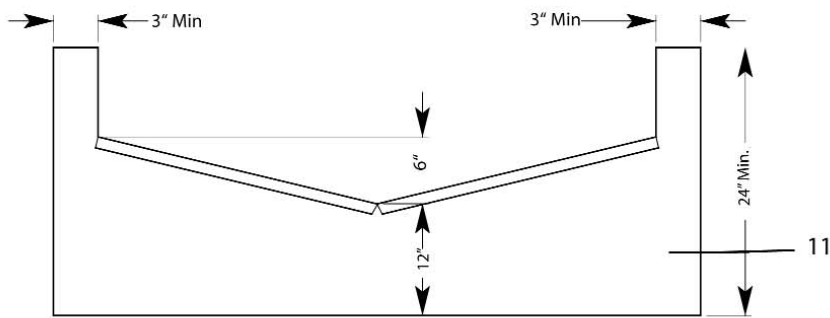


PENETRATIONS - II

While installing #11, apply two beads of "H" between #1 and #45



General Note: Unless specified otherwise, all fasteners for trim component attachment are to be at 2'-0" o.c. maximum.



1/2" Hem on Top

Reference

A. As Supplied by ATAS

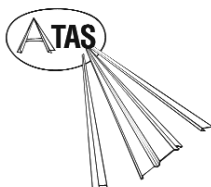
- #1 - Standing Seam Panels
- #2 - Anchor Clips
- #11 - Top Cover Flashing

Note: #11 to be field fabricated to fit from flat sheets as supplied by ATAS.

B. As Supplied by Others

- "A" -ATA-Guard or equal
- "B" - 5/8 min. roof sheathing
- "C" - Structurals
- "E" - #10 x 1" wafer head screws
- "H" - appropriate sealant
- "X" - Square/Rectangle penetration with trim and counterflashing

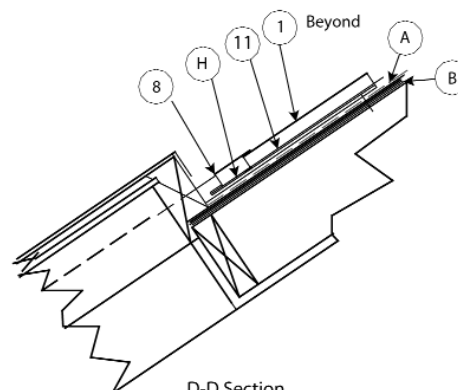
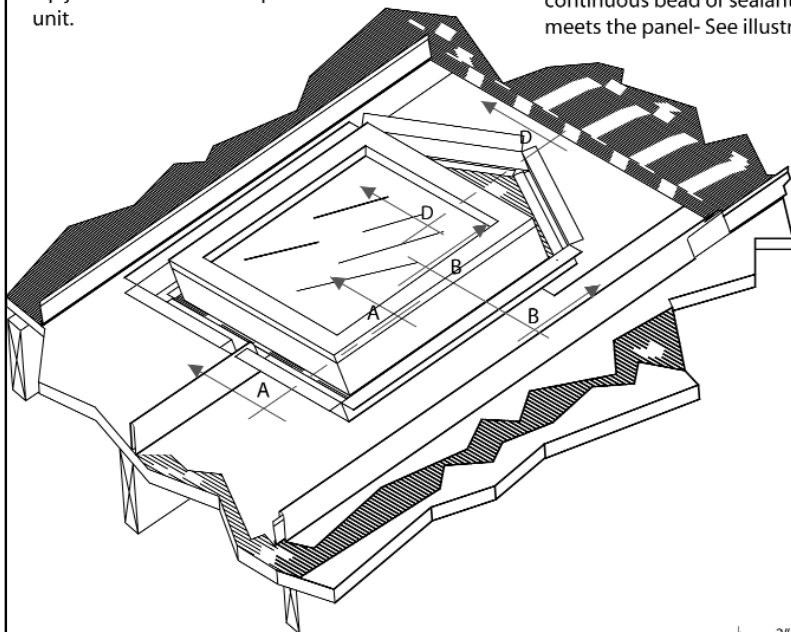
Allentown, PA 18106
 ph:(800)468-1441
 info@atas.com
 fax:(610)395-9342



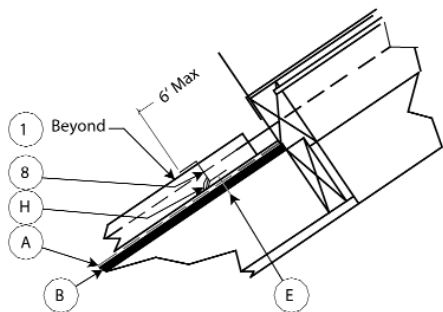
PENETRATIONS - III

Install the "Z" closure- #8- in the longest length possible by cutting both the top and bottom horizontal legs only (not the vertical leg) and bending the piece in the field to suit. Also, try to keep the closing lap joint at the "down slope" end of the unit.

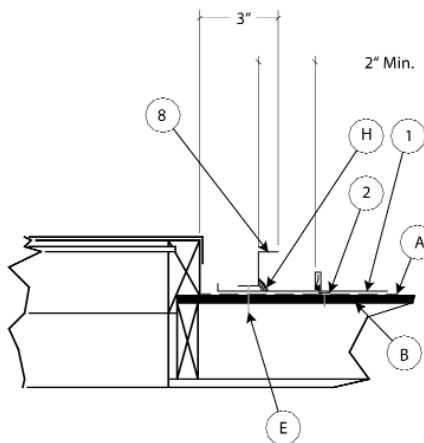
Seat the "Z" closure (#8) in a continuous bead of caulk or a strip of double - faced caulk tape before securing in place and then apply a continuous bead of sealant where part #8 meets the panel- See illustration below.



D-D Section
 Section at top of Penetration



A-A Section
 Section at Bottom of Penetration



B-B Section
 Section at Middle/Side of Penetration

Reference

A. As supplied by ATAS:

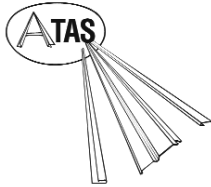
- #1 - Standing Seam panels
- #2 - Anchor Clips
- #11 - Top cover flashing

Note: #11 to be field fabricated to fit from flat sheets as supplied by ATAS

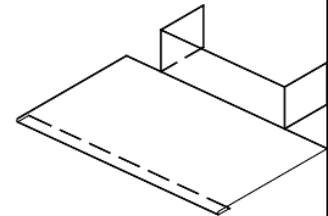
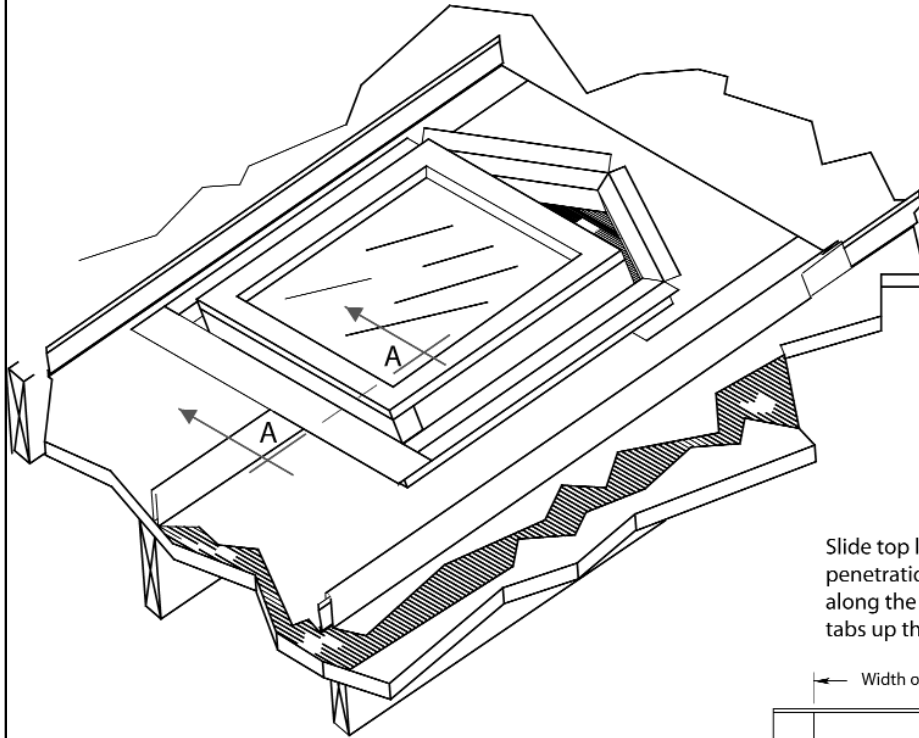
B. As Supplied by Others

- "A" - 30# felt min. and rosin paper
- "B" - 5/8" min. roof sheathing
- "C" - structurals
- "E" - #10 x 1" wafer head screws
- "H" - appropriate sealant
- "X" - Square/Rectangle penetration with trim and counterflashing

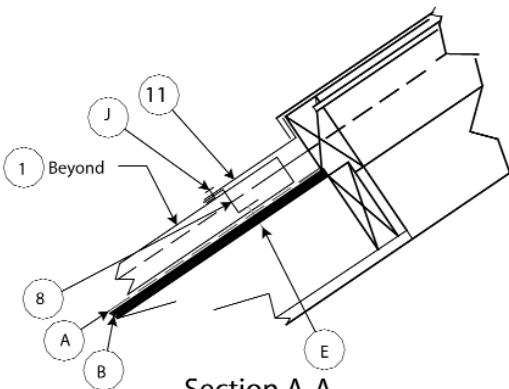
Allentown, PA 18106
 ph:(800)468-1441
 info@atas.com
 fax:(610)395-9342



PENETRATIONS - IV

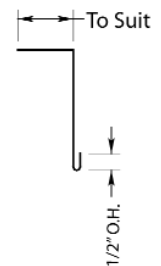
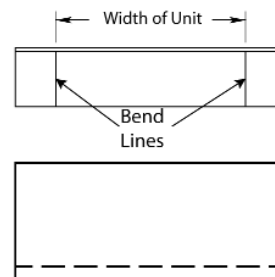


Slide top leg of #46 up under top trim of penetration and then after cutting carefully along the main fold line, Wrap the remaining tabs up the sides of penetration.



Section A-A

Section at Bottom
of Penetration



Reference

A. As Supplied by ATAS

#1 - Standing Seam Panel

#2 - Anchor Clips

#8 - "Z" closure

Note: #11 and 12 to be field fabricated to fit from flat sheets as provided by ATAS

#11 - Top cover piece

B. As supplied by Others

"A" - ATA Guard or equal

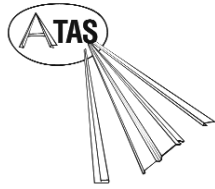
"B" - 5/8 min. roof sheathing

"C" - structurals

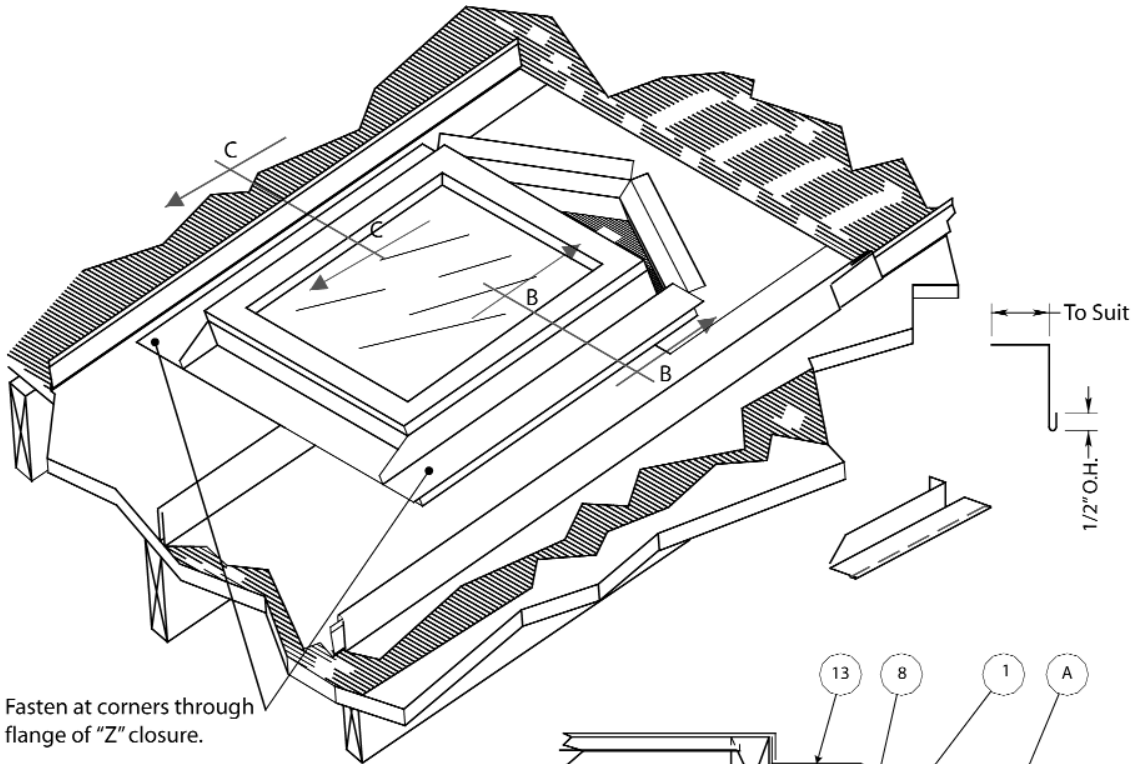
"D" - Square/Rectangle penetration with trim and counterflashing

"J" - Pop Rivet

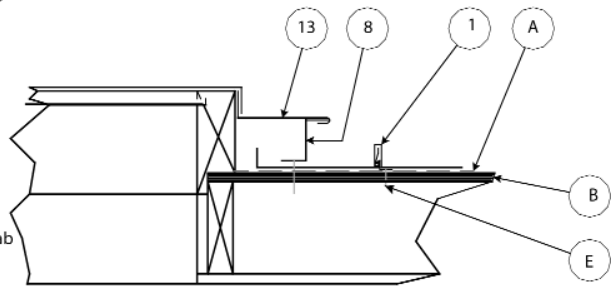
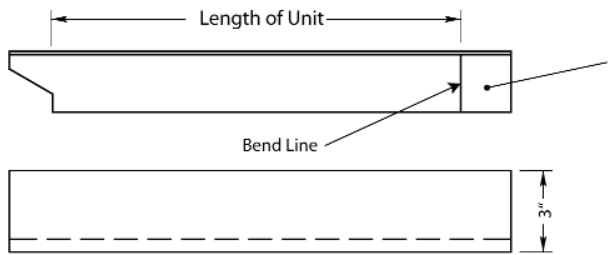
Allentown, PA 18106
 ph:(800)468-1441
 info@atas.com
 fax:(610)395-9342



PENETRATIONS - V



Fasten at corners through flange of "Z" closure.



Section C-C

Section at Middle / Side of penetration. Both sides are treated the same way.

47 Field Cut / Fabricate

Slide top leg of #47 up, under top trim of skylight unit, and, after cutting, carefully, wrap the top tab around the head of penetration.

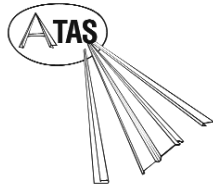
Reference

- A. As Supplied by ATAS
 #1 - Standing Seam Panel
 #2 - Anchor Clips
 #8 - "Z" closure

Note: #13 to be field fabricated to fit from flat sheet as supplied by ATAS
 # 13 - Side wall transition

- B. As Supplied by Others
 "A" - ATA-Guard or equal
 "B" - 5/8" min roof sheathing
 "C" - structurals
 "E" - #10 x 1" wafer head screws
 "X" - Square/Rectangle penetration with trim and counterflashing
 "H" - Appropriate Sealant

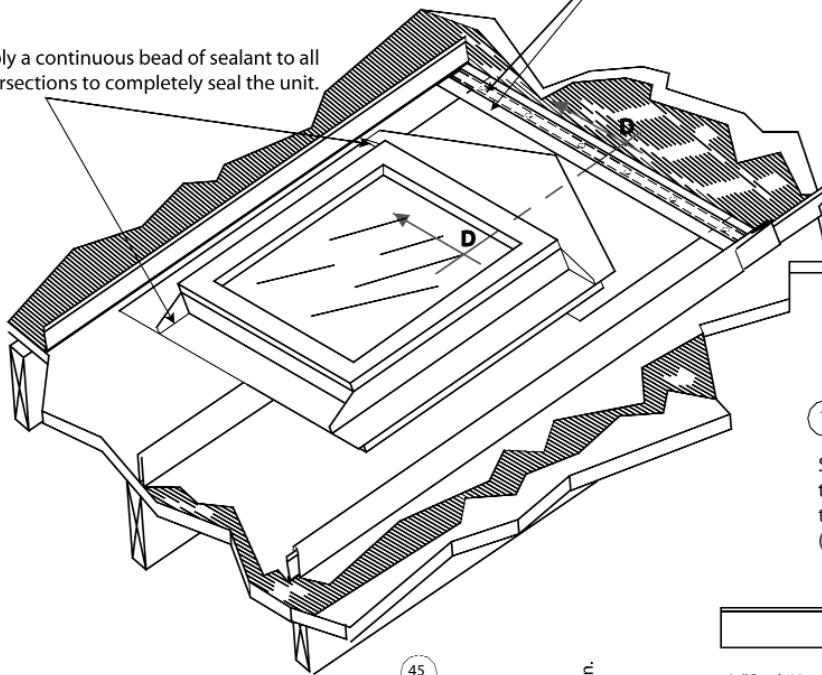
Allentown, PA 18106
 ph:(800)468-1441
 info@atas.com
 fax:(610)395-9342



PENETRATIONS - VI

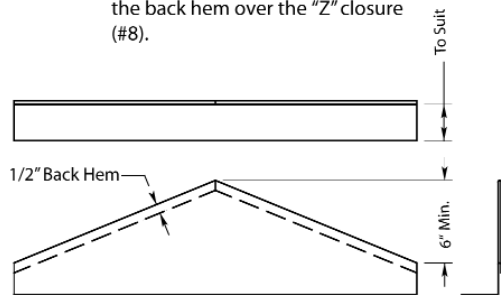
After completing this step and before proceeding, apply joggle cleat set on butyl tape to provide a 4" minimum lap area.

Apply a continuous bead of sealant to all intersections to completely seal the unit.

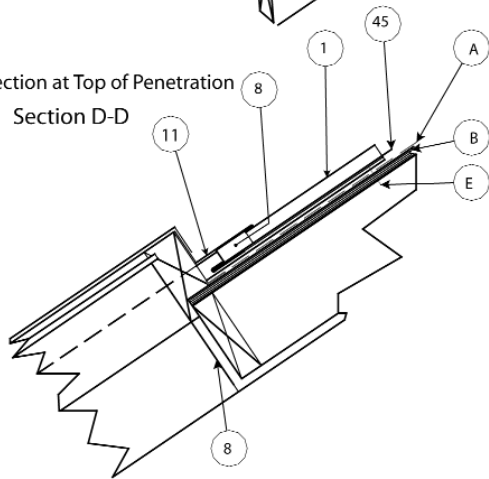


11 — Field Cut / Fabricate

Slide top leg of #14 up under top trim of penetration while engaging the back hem over the "Z" closure (#8).



Section at Top of Penetration
 Section D-D



Reference

A. As Supplied by ATAS

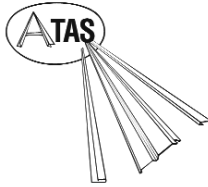
- #1 - Standing Seam Panel
- #2 - Anchor Clips
- #8 - "Z" Closure

Note: # 13 to be field fabricated to fit from flat sheet as supplied by ATAS.
 #13 - Side Wall transition

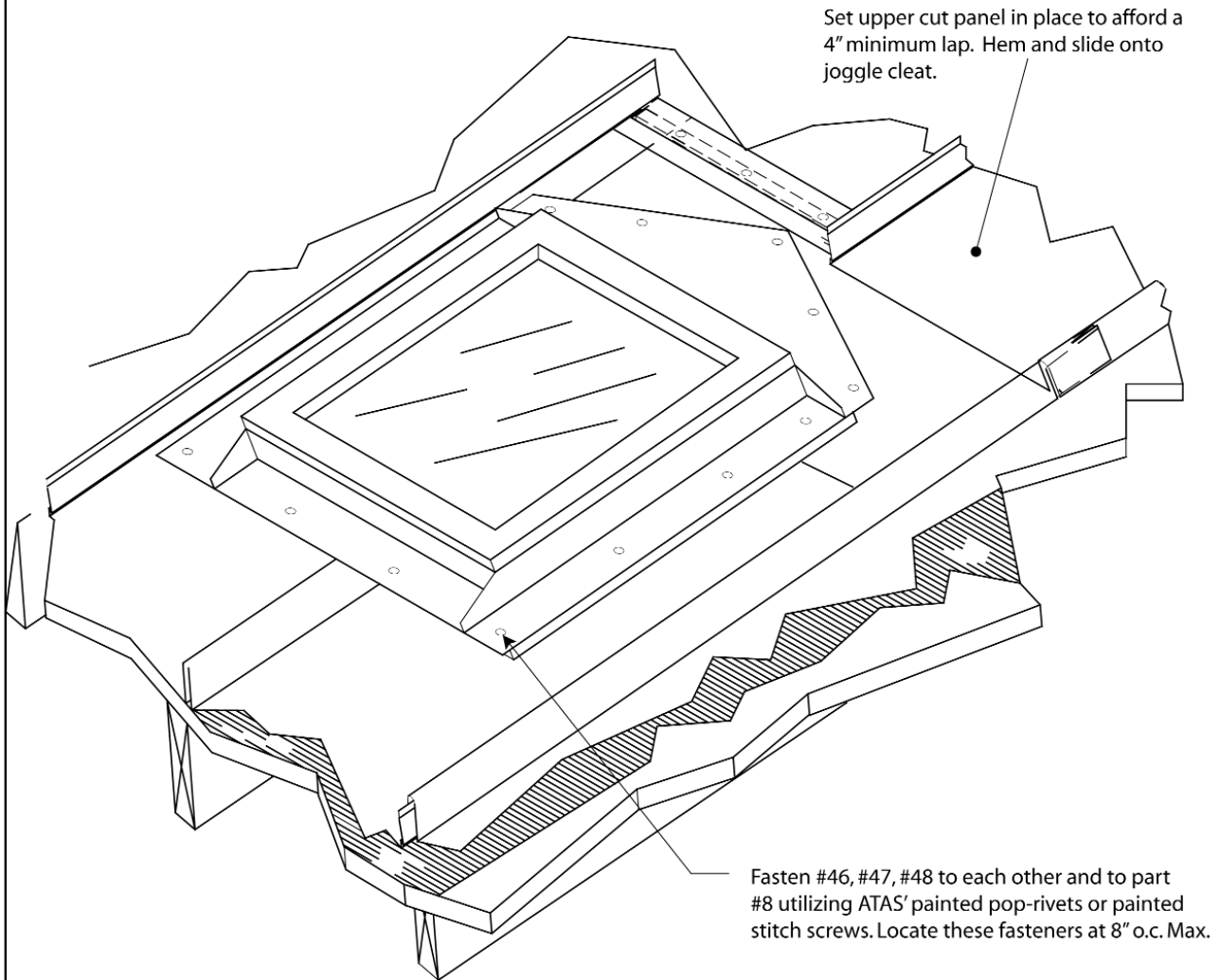
B. As Supplied by Others

- "A" - ATA-Guard or equal
- "B" - 5/8" min. Roof sheathing
- "C" - structurals
- "E" - #10 x 1" Wafer Head Screws
- "X" - Square/Rectangle penetration with trim and counterflashing

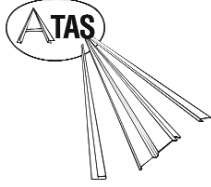
Allentown, PA 18106
ph:(800)468-1441
info@atas.com
fax:(610)395-9342



PENETRATIONS - VII



Allentown, PA 18106
ph:(800)468-1441
info@atas.com
fax:(610)395-9342



PENETRATIONS - VIII

Set next cut panel in place to align with previously set panel & then slide onto joggle cleat.

